

CD66b antibody [80H3] (FITC)

Cat. No. GTX75907

Host	Mouse
Clonality	Monoclonal
Isotype	IgG1
Applications	ICC/IF, FCM
Reactivity	Human

References (3)

Package

1 ml

Applications

Application Note

*Optimal dilutions/concentrations should be determined by the researcher.

Suggested dilution	Recommended dilution
ICC/IF	Assay dependent
FCM	Neat

Note : Use 20µl of the suggested working dilution to label 5 x 10⁵ cells or 100µl of whole blood.

Not tested in other applications.

Calculated MW 38 kDa. ([Note](#))

Properties

Form	Liquid
Buffer	PBS, 0.2% BSA
Preservative	0.1% Sodium azide
Storage	Store as concentrated solution. Centrifuge briefly prior to opening vial. Store at 4°C. DO NOT FREEZE. Protect from light.
Concentration	Batch dependent (Please refer to the vial label for the specific concentration.)
Immunogen	Human leucocytes from individuals with CML.
Purification	Purified IgG
Conjugation	Fluorescein isothiocyanate (FITC) Wavelength

Note

For laboratory research use only. Not for any clinical, therapeutic, or diagnostic use in humans or animals. Not for animal or human consumption.

Purchasers shall not, and agree not to enable third parties to, analyze, copy, reverse engineer or otherwise attempt to determine the structure or sequence of the product.

For full product information, images and publications, please visit our [website](#).

DATA IMAGES

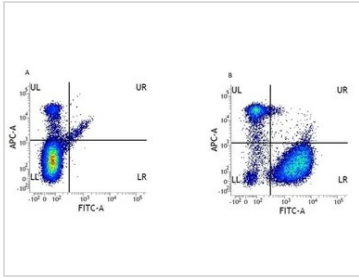
**GTX75907 FCM Image**

Figure A. APC conjugated mouse anti human CD14 antibody and FITC conjugated Mouse IgG1 isotype control (GTX76638). Figure B. APC conjugated mouse anti human CD14 antibody and FITC conjugated mouse anti human CD66b (GTX75907). All experiments performed on red cell lysed Human peripheral blood gated on myeloid cells.



For full product information, images and publications, please visit our [website](#).