

CCR5 antibody [HEK/1/85a] (PE)

Cat. No. GTX75915

Host	Rat
Clonality	Monoclonal
Isotype	IgG2a
Application	FACS
Reactivity	Human

Reference (1)

Package

1 ml

APPLICATION

Application Note

*Optimal dilutions/concentrations should be determined by the researcher.

Suggested dilution	Recommended dilution
FACS	Neat - 1/5

Note : Use 10 μ l of the suggested working dilution to label 10⁶ cells in 100 μ l.

Not tested in other applications.

Calculated MW 41 kDa. ([Note](#))

PROPERTIES

Form	Liquid
Buffer	PBS, 1% BSA, 5% Sucrose
Preservative	0.09% Sodium azide
Storage	Store as concentrated solution. Centrifuge briefly prior to opening vial. Store at 4°C. DO NOT FREEZE. Protect from light.
Concentration	Batch dependent (Please refer to the vial label for the specific concentration.)
Immunogen	CHO cells transfected with human CCR5.
Purification	Protein G purified From tissue culture supernatant
Conjugation	Phycoerythrin (PE)

Note

For laboratory research use only. Not for any clinical, therapeutic, or diagnostic use in humans or animals. Not for animal or human consumption.

Purchasers shall not, and agree not to enable third parties to, analyze, copy, reverse engineer or otherwise attempt to determine the structure or sequence of the product.



For full product information, images and publications, please visit our [website](#).

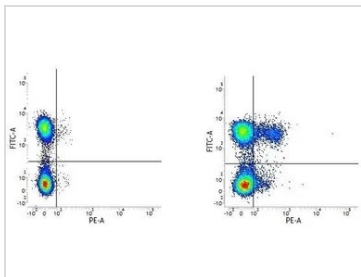
DATA IMAGES

GTX75915 FACS Image

Image A. Alexa Fluor 488 conjugated Mouse anti Human CD3 and RPE conjugated Rat IgG2a isotype control. Image B. Alexa Fluor 488 conjugated Mouse anti Human CD3 and RPE conjugated Rat anti Human CCR5 (GTX75915). All experiments performed on human Peripheral blood lymphocytes



For full product information, images and publications, please visit our [website](https://www.genetex.com).