

CD13 antibody [R3-63]

Cat. No. GTX75927

| | |
|--------------|----------------------------|
| Host | Rat |
| Clonality | Monoclonal |
| Isotype | IgG2a |
| Applications | ICC/IF, IHC-P, IHC-Fr, FCM |
| Reactivity | Mouse |

References (1)

Package

125 µg

Applications

Application Note

*Optimal dilutions/concentrations should be determined by the researcher.

| Suggested dilution | Recommended dilution |
|--------------------|----------------------|
| ICC/IF | Assay dependent |
| IHC-P | Assay dependent |
| IHC-Fr | Assay dependent |
| FCM | 1/50-1/100 |

Note : Use 10µl of the suggested working dilution to label 10⁶ cells in 100µl.

Not tested in other applications.

Properties

| | |
|---------------|--|
| Form | Liquid |
| Buffer | PBS |
| Preservative | 0.09% Sodium azide |
| Storage | Store as concentrated solution. Centrifuge briefly prior to opening vial. For short-term storage (1-2 weeks), store at 4°C. For long-term storage, aliquot and store at -20°C or below. Avoid multiple freeze-thaw cycles. |
| Concentration | 1.0 mg/ml (Please refer to the vial label for the specific concentration.) |
| Immunogen | Mouse intestinal CD13 |
| Purification | Protein G purified |
| Conjugation | Unconjugated |

Note

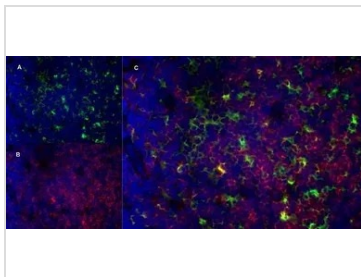
For laboratory research use only. Not for any clinical, therapeutic, or diagnostic use in humans or animals. Not for animal or human consumption.

Purchasers shall not, and agree not to enable third parties to, analyze, copy, reverse engineer or otherwise attempt to determine the structure or sequence of the product.



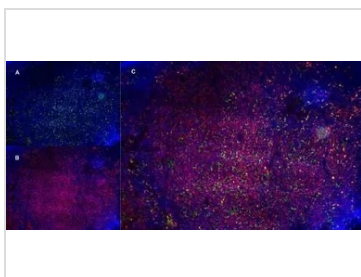
For full product information, images and publications, please visit our [website](#).

DATA IMAGES



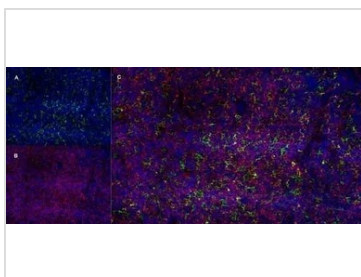
GTX75927 IHC-Fr Image

IHC-Fr staining of a mouse lymph node with Rat anti Mouse CD13 antibody, clone R3-63 (GTX75927), green in A and Rat anti Mouse CD8, clone YTS105.18 (GTX74642), red in B. C is the merged image with nuclei counterstained blue using DAPI. High power



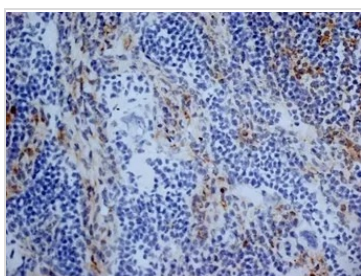
GTX75927 IHC-Fr Image

IHC-Fr staining of a mouse lymph node with Rat anti Mouse CD13 antibody, clone R3-63 (GTX75927), green in A and Rat anti Mouse CD8, clone YTS105.18 (GTX74642), red in B. C is the merged image with nuclei counterstained blue using DAPI. Low power



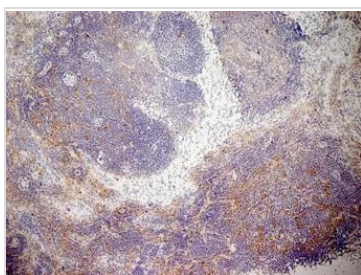
GTX75927 IHC-Fr Image

IHC-Fr staining of a mouse lymph node with Rat anti Mouse CD13 antibody, clone R3-63 (GTX75927), green in A and Rat anti Mouse CD8, clone YTS105.18 (GTX74642), red in B. C is the merged image with nuclei counterstained blue using DAPI. Medium power



GTX75927 IHC-Fr Image

IHC-Fr analysis of mouse lymph node tissue using GTX75927 CD13 antibody [R3-63].



GTX75927 IHC-Fr Image

IHC-Fr analysis of mouse lymph node tissue using GTX75927 CD13 antibody [R3-63].



For full product information, images and publications, please visit our [website](https://www.genetex.com).