

KIR family antibody [NKVFS1] (PE)

Cat. No. GTX76005

Host	Mouse
Clonality	Monoclonal
Isotype	IgG1
Applications	FCM
Reactivity	Human

Package
1 ml

Applications

Application Note

*Optimal dilutions/concentrations should be determined by the researcher.

Suggested dilution	Recommended dilution
FCM	Neat

Note : Use 10 μ l of the suggested working dilution to label 10⁶ cells in 100 μ l.

Not tested in other applications.

Product Note

This antibody recognizes the long and short forms CD158a and CD158b (KIR2DL, KIR2DS1 and KIR2DS2 respectively) and also p50.3 (KIR2DS4).

Properties

Form	Liquid
Buffer	PBS, 1% BSA, 5% Sucrose
Preservative	0.09% Sodium azide
Storage	Store as concentrated solution. Centrifuge briefly prior to opening vial. Store at 4°C. DO NOT FREEZE. Protect from light.
Concentration	Batch dependent (Please refer to the vial label for the specific concentration.)
Purification	Protein G purified From tissue culture supernatant
Conjugation	Phycoerythrin (PE) Wavelength

Note

For laboratory research use only. Not for any clinical, therapeutic, or diagnostic use in humans or animals. Not for animal or human consumption.

Purchasers shall not, and agree not to enable third parties to, analyze, copy, reverse engineer or otherwise attempt to determine the structure or sequence of the product.



For full product information, images and publications, please visit our [website](#).

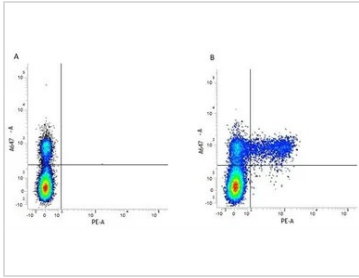
DATA IMAGES

GTX76005 FCM Image

Figure A. Alexa647R conjugated mouse anti human CD56 and RPE conjugated Mouse IgG1 isotype control. Figure B. Alexa647R conjugated mouse anti human CD56 and RPE conjugated mouse anti human CD158a (GTX76005). All experiments performed on red cell lysed Human peripheral blood gated on lymphocytes.

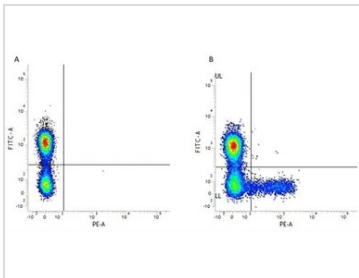

GTX76005 FCM Image

Figure A. FITC conjugated mouse anti human CD3) and RPE conjugated Mouse IgG1 isotype control (GTX76639). Figure B. FITC conjugated mouse anti human CD3 and RPE conjugated mouse anti human CD158a (GTX76005). All experiments performed on red cell lysed Human peripheral blood gated on lymphocytes.



For full product information, images and publications, please visit our [website](https://www.genetex.com).