

IL2 Receptor alpha antibody [MRC OX-39] (FITC)

Cat. No. GTX76047

Host	Mouse
Clonality	Monoclonal
Isotype	IgG1
Applications	IHC-P, IHC-Fr, FCM
Reactivity	Rat

Package
100 µg

Applications

Application Note

*Optimal dilutions/concentrations should be determined by the researcher.

Suggested dilution	Recommended dilution
IHC-P	Assay dependent
IHC-Fr	Assay dependent
FCM	Assay dependent

Not tested in other applications.

Properties

Form	Liquid
Buffer	PBS, 0.5% BSA
Preservative	0.02% Sodium azide
Storage	Store as concentrated solution. Centrifuge briefly prior to opening vial. For short-term storage (1-2 weeks), store at 4°C. For long-term storage, aliquot and store at -20°C or below. Avoid multiple freeze-thaw cycles. Protect from light.
Concentration	0.1 mg/ml (Please refer to the vial label for the specific concentration.)
Immunogen	T blasts from a mixed lymphocyte reaction between purified CD4 positive T cells and irradiated spleens.
Purification	Purified IgG
Conjugation	Fluorescein isothiocyanate (FITC) Wavelength

Note

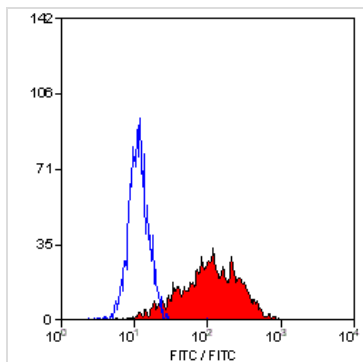
For laboratory research use only. Not for any clinical, therapeutic, or diagnostic use in humans or animals. Not for animal or human consumption.

Purchasers shall not, and agree not to enable third parties to, analyze, copy, reverse engineer or otherwise attempt to determine the structure or sequence of the product.



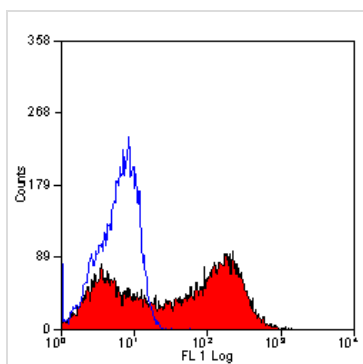
For full product information, images and publications, please visit our [website](#).

DATA IMAGES



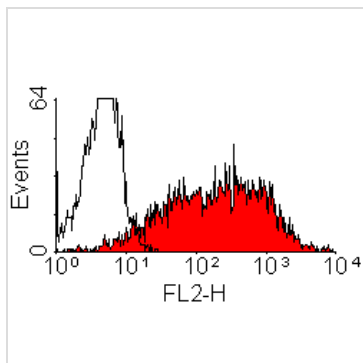
GTX76047 FCM Image

Staining of stimulated rat spleen cells with Mouse anti Rat CD25:FITC (GTX76047)



GTX76047 FCM Image

Staining of Con A activated rat spleen cells with Mouse anti Rat CD25: Biotin (GTX76046)



GTX76047 FCM Image

Staining of ConA activated rat splenic lymphocytes with Mouse anti Rat CD25:RPE (GTX76049)



For full product information, images and publications, please visit our [website](#).