

IL2 Receptor alpha antibody [MRC OX-39]

Cat. No. GTX76050

Host	Mouse
Clonality	Monoclonal
Isotype	IgG1
Applications	IHC-P, IHC-Fr, FCM
Reactivity	Rat

Package

250 µg

Applications

Application Note

For FACS: Use at an assay dependent dilution. For IHC-Fr: Use at an assay dependent dilution. For IHC-P: Use at an assay dependent dilution. Optimal dilutions/concentrations should be determined by the researcher.

Properties

Form	Liquid
Buffer	PBS
Preservative	0.02% Sodium azide
Storage	Store as concentrated solution. Centrifuge briefly prior to opening vial. For short-term storage (1-2 weeks), store at 4°C. For long-term storage, aliquot and store at -20°C or below. Avoid multiple freeze-thaw cycles.
Concentration	1.0 mg/ml (Please refer to the vial label for the specific concentration.)
Immunogen	T blasts from a mixed lymphocyte reaction between purified CD4 positive T cells and irradiated spleens.
Purification	Protein G purified
Conjugation	Unconjugated

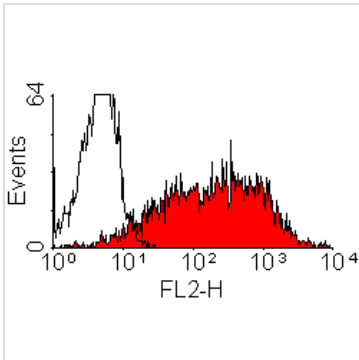
Note

For laboratory research use only. Not for any clinical, therapeutic, or diagnostic use in humans or animals. Not for animal or human consumption.

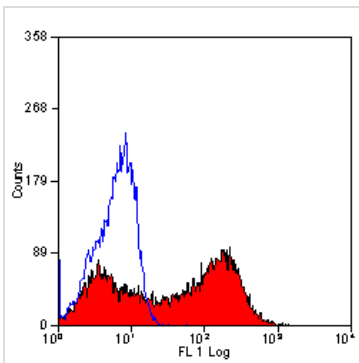
Purchasers shall not, and agree not to enable third parties to, analyze, copy, reverse engineer or otherwise attempt to determine the structure or sequence of the product.



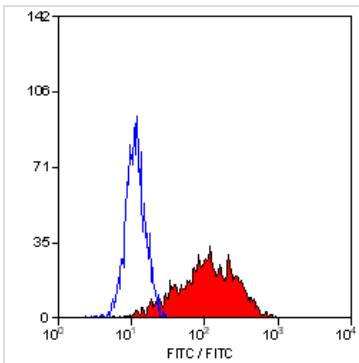
For full product information, images and publications, please visit our [website](#).

DATA IMAGES

GTX76050 FCM Image

Staining of ConA activated rat splenic lymphocytes with Mouse anti Rat CD25:RPE (GTX76049)


GTX76050 FCM Image

Staining of Con A activated rat spleen cells with Mouse anti Rat CD25: Biotin (GTX76046)


GTX76050 FCM Image

Staining of stimulated rat spleen cells with Mouse anti Rat CD25:FITC (GTX76047)



For full product information, images and publications, please visit our [website](https://www.genetex.com).