

## CD8 antibody [YTC182.20] (FITC)

Cat. No. GTX76096

Host	Rat
Clonality	Monoclonal
Isotype	IgG2b
Applications	FCM
Reactivity	Human, Cynomolgus monkey, Rhesus Monkey

**Package**  
1 ml

## Applications

## Application Note

\*Optimal dilutions/concentrations should be determined by the researcher.

Suggested dilution	Recommended dilution
FCM	Neat

**Note : Use 10 $\mu$ l of the suggested working dilution to label 10<sup>6</sup> cells or 100 $\mu$ l whole blood.**

Not tested in other applications.

## Properties

Form	Liquid
Buffer	PBS, 1% BSA
Preservative	0.09% Sodium azide
Storage	Store as concentrated solution. Centrifuge briefly prior to opening vial. For short-term storage (1-2 weeks), store at 4°C. For long-term storage, aliquot and store at -20°C or below. Avoid multiple freeze-thaw cycles. Protect from light.
Concentration	0.1 mg/ml (Please refer to the vial label for the specific concentration.)
Immunogen	Mouse L cells transfected with human CD8 gene.
Purification	Purified IgG
Conjugation	Fluorescein isothiocyanate (FITC) <a href="#">Wavelength</a>

## Note

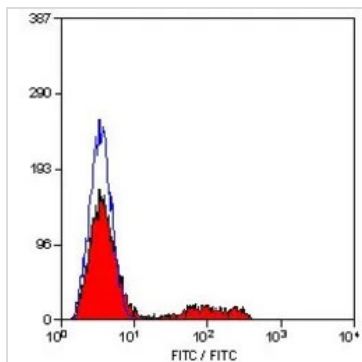
For laboratory research use only. Not for any clinical, therapeutic, or diagnostic use in humans or animals. Not for animal or human consumption.

Purchasers shall not, and agree not to enable third parties to, analyze, copy, reverse engineer or otherwise attempt to determine the structure or sequence of the product.



For full product information, images and publications, please visit our [website](#).

## DATA IMAGES



### GTX76096 FCM Image

FACS analysis of human peripheral blood lymphocytes using GTX76096 CD8 antibody [YTC182.20] (FITC).



For full product information, images and publications, please visit our [website](#).

Date 2026 / 01 / 30 Page 2 of 2