

Myelin basic protein antibody [12]

Cat. No. GTX76114

Host	Rat
Clonality	Monoclonal
Isotype	IgG2a
Applications	WB, ICC/IF, ELISA, RIA
Reactivity	Human, Mouse, Rat, Rabbit, Sheep, Bovine, Chicken, Guinea pig, Pig

References (1)
 Package
 1 ml

Applications

Application Note

*Optimal dilutions/concentrations should be determined by the researcher.

Suggested dilution	Recommended dilution
WB	Assay dependent
ICC/IF	Assay dependent
ELISA	Assay dependent
RIA	Assay dependent

Not tested in other applications.

Properties

Form	Liquid
Buffer	Tissue culture supernatant, 0.1M Tris
Preservative	0.1% Sodium azide
Storage	Store as concentrated solution. Centrifuge briefly prior to opening vial. For short-term storage (1-2 weeks), store at 4°C. For long-term storage, aliquot and store at -20°C or below. Avoid multiple freeze-thaw cycles.
Immunogen	Bovine MBP
Purification	Tissue Culture Supernatant
Conjugation	Unconjugated

Note

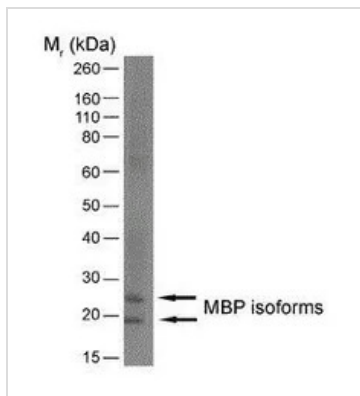
For laboratory research use only. Not for any clinical, therapeutic, or diagnostic use in humans or animals. Not for animal or human consumption.

Purchasers shall not, and agree not to enable third parties to, analyze, copy, reverse engineer or otherwise attempt to determine the structure or sequence of the product.



For full product information, images and publications, please visit our [website](#).

DATA IMAGES

**GTX76114 WB Image**

WB analysis of mouse brain tissue lysate using GTX76114 Myelin basic protein antibody [12].



For full product information, images and publications, please visit our [website](#).