

TCR alpha + TCR beta antibody [R73]

Cat. No. GTX76146

Host	Mouse
Clonality	Monoclonal
Isotype	IgG1
Applications	IHC-Fr, FCM, IP
Reactivity	Rat

Package
250 µg

Applications

Application Note

For FACS: Use at an assay dependent dilution. For IHC-Fr: Use at an assay dependent dilution. For IP: Use at an assay dependent dilution. Optimal dilutions/concentrations should be determined by the researcher.

Product Note Rat alpha and beta TCR

Properties

Form	Liquid
Buffer	PBS, BSA
Preservative	0.02% Sodium azide
Storage	Store as concentrated solution. Centrifuge briefly prior to opening vial. For short-term storage (1-2 weeks), store at 4°C. For long-term storage, aliquot and store at -20°C or below. Avoid multiple freeze-thaw cycles.
Concentration	1.0 mg/ml (Please refer to the vial label for the specific concentration.)
Immunogen	Rat T Blasts and Erythrocytes
Purification	Protein G affinity purified
Conjugation	Unconjugated

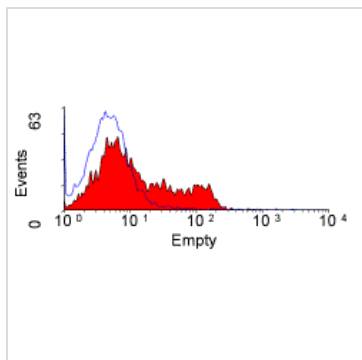
Note

For laboratory research use only. Not for any clinical, therapeutic, or diagnostic use in humans or animals. Not for animal or human consumption.

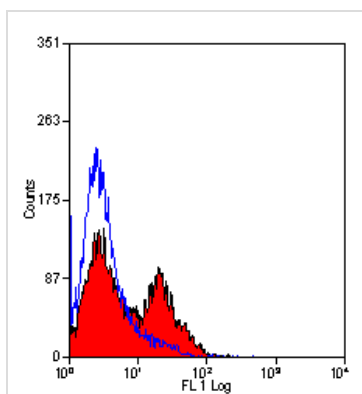
Purchasers shall not, and agree not to enable third parties to, analyze, copy, reverse engineer or otherwise attempt to determine the structure or sequence of the product.



For full product information, images and publications, please visit our [website](#).

DATA IMAGES

GTX76146 FCM Image

Staining of rat splenocytes with Mouse anti Rat TCY alpha/beta:FITC (GTX29317)


GTX76146 FCM Image

Staining of rat spleen cells with Mouse anti Rat TCR alpha/beta:Low Endotoxin (GTX29314)



For full product information, images and publications, please visit our [website](#).