

TCR alpha + TCR beta antibody [R73] (PE)

Cat. No. GTX76147

Host	Mouse
Clonality	Monoclonal
Isotype	IgG1
Applications	IHC-Fr, FCM
Reactivity	Rat

Package
50 µg

Applications

Application Note

*Optimal dilutions/concentrations should be determined by the researcher.

Suggested dilution	Recommended dilution
IHC-Fr	Assay dependent
FCM	Assay dependent

Not tested in other applications.

Product Note Rat alpha and beta TCR

Properties

Form	Liquid
Buffer	PBS, BSA
Preservative	0.02% Sodium azide
Storage	Store as concentrated solution. Centrifuge briefly prior to opening vial. Store at 4°C. DO NOT FREEZE. Protect from light.
Concentration	0.1 mg/ml (Please refer to the vial label for the specific concentration.)
Immunogen	Rat T Blasts and Erythrocytes
Purification	Protein G purified
Conjugation	Phycoerythrin (PE) Wavelength

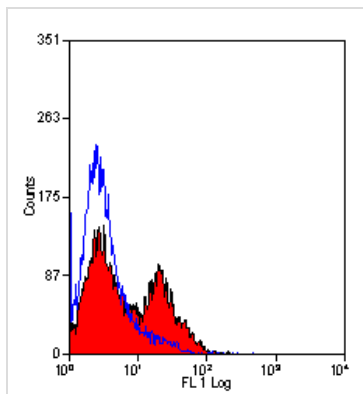
Note

For laboratory research use only. Not for any clinical, therapeutic, or diagnostic use in humans or animals. Not for animal or human consumption.

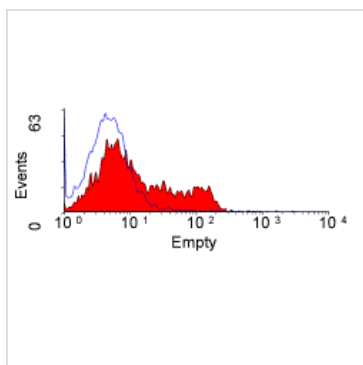
Purchasers shall not, and agree not to enable third parties to, analyze, copy, reverse engineer or otherwise attempt to determine the structure or sequence of the product.



For full product information, images and publications, please visit our [website](#).

DATA IMAGES

GTX76147 FCM Image

Staining of rat spleen cells with Mouse anti Rat TCR alpha/beta:Low Endotoxin (GTX29314)


GTX76147 FCM Image

Staining of rat splenocytes with Mouse anti Rat TCR alpha/beta:FITC (GTX29317)


 For full product information, images and publications, please visit our [website](#).