

# CD45RO antibody [UCHL1] (FITC)

**Cat. No. GTX76157**

<b>Host</b>	Mouse
<b>Clonality</b>	Monoclonal
<b>Isotype</b>	IgG2a
<b>Applications</b>	FCM
<b>Reactivity</b>	Human, Chimpanzee

References ( 8 )

Package

100 test

## PRODUCT

### Summary

The UCHL1 antibody reacts with the human CD45 isoform known as CD45RO, a protein tyrosine phosphatase of  $\geq 220$  kDa. CD45 is one of the most abundant hematopoietic markers, and is expressed on all leukocytes (the Leukocyte Common Antigen, LCA). Various isoforms are generated and expressed in cell-specific patterns. With their broad cell distribution, CD45 isoforms are critical for many leukocyte functions, regulating signal transduction and cell activation associated with the T cell receptor, B cell receptor, and IL-2 receptor. Other forms of CD45, with restricted cellular expression, include CD45R (B220), CD45RA and CD45RB.

### Applications

#### Application Note

\*Optimal dilutions/concentrations should be determined by the researcher.

Suggested dilution	Recommended dilution
FCM	0.5 $\mu$ g (5 $\mu$ l) for $10^5$ - $10^8$ cells in 100 $\mu$ l sample per test

Not tested in other applications.

## Properties

<b>Form</b>	Liquid
<b>Buffer</b>	10mM NaH <sub>2</sub> PO <sub>4</sub> , 150mM NaCl, 0.1% Gelatin
<b>Preservative</b>	0.09% Sodium azide
<b>Storage</b>	Store as concentrated solution. Centrifuge briefly prior to opening vial. Store at 4°C. DO NOT FREEZE. Protect from light.
<b>Concentration</b>	0.1 mg/ml (Please refer to the vial label for the specific concentration.)
<b>Immunogen</b>	Human IL-2 dependent T cells
<b>Purification</b>	Purified by affinity chromatography From tissue culture supernatant
<b>Conjugation</b>	Fluorescein isothiocyanate (FITC) <a href="#">Wavelength</a>

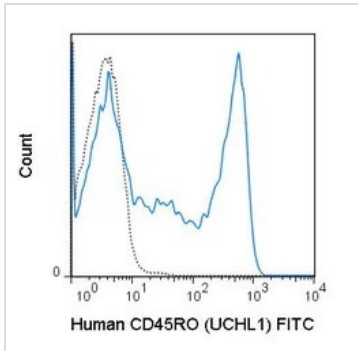


For full product information, images and publications, please visit our [website](#).

For laboratory research use only. Not for any clinical, therapeutic, or diagnostic use in humans or animals. Not for animal or human consumption.

**Note**

Purchasers shall not, and agree not to enable third parties to, analyze, copy, reverse engineer or otherwise attempt to determine the structure or sequence of the product.

**DATA IMAGES**

**GTX76157 FCM Image**

FACS analysis of human peripheral blood lymphocytes using GTX76157 CD45RO antibody [UCLH1] (FITC).

Solid line : Primary antibody

Dashed line : FITC mouse IgG2a isotype control

Antibody amount : 1 µg



For full product information, images and publications, please visit our [website](#).