

## CD3 epsilon antibody [UCHT1] (FITC)

Cat. No. GTX76167

Host	Mouse
Clonality	Monoclonal
Isotype	IgG1
Applications	FCM
Reactivity	Human

References ( 9 )  
 Package  
 100 test

## PRODUCT

## Summary

The UCHL1 antibody reacts with the human CD45 isoform known as CD45RO, a protein tyrosine phosphatase of  $\geq 220$  kDa. CD45 is one of the most abundant hematopoietic markers, and is expressed on all leukocytes (the Leukocyte Common Antigen, LCA). Various isoforms are generated and expressed in cell-specific patterns. With their broad cell distribution, CD45 isoforms are critical for many leukocyte functions, regulating signal transduction and cell activation associated with the T cell receptor, B cell receptor, and IL-2 receptor. Other forms of CD45, with restricted cellular expression, include CD45R (B220), CD45RA and CD45RB.

## Applications

## Application Note

\*Optimal dilutions/concentrations should be determined by the researcher.

Suggested dilution	Recommended dilution
FCM	1 $\mu$ g (5 $\mu$ l) for $10^5$ - $10^8$ cells in 100 $\mu$ l sample per test

Not tested in other applications.

## Product Note

This antibody reacts with the epsilon chain of the CD3 complex.

## Properties

Form	Liquid
Buffer	10mM NaH <sub>2</sub> PO <sub>4</sub> , 150mM NaCl, 0.1% Gelatin
Preservative	0.09% Sodium azide
Storage	Store as concentrated solution. Centrifuge briefly prior to opening vial. Store at 4°C. DO NOT FREEZE. Protect from light.
Concentration	0.2 mg/ml (Please refer to the vial label for the specific concentration.)
Immunogen	human thymocytes followed by Sezary T cells
Purification	Purified by affinity chromatography From tissue culture supernatant
Conjugation	Fluorescein isothiocyanate (FITC) <a href="#">Wavelength</a>



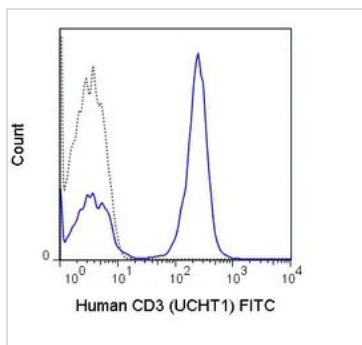
For full product information, images and publications, please visit our [website](#).

For laboratory research use only. Not for any clinical, therapeutic, or diagnostic use in humans or animals. Not for animal or human consumption.

## Note

Purchasers shall not, and agree not to enable third parties to, analyze, copy, reverse engineer or otherwise attempt to determine the structure or sequence of the product.

## DATA IMAGES



### GTX76167 FCM Image

FACS analysis of human peripheral blood lymphocytes using GTX76167 CD3 epsilon antibody [UCHT1] (FITC).

Solid line : Primary antibody

Dashed line : FITC mouse IgG1 isotype control.

Antibody amount : 1  $\mu$ g



For full product information, images and publications, please visit our [website](#).