

CD3 epsilon antibody [UCHT1] (PE)

Cat. No. GTX76169

Host	Mouse
Clonality	Monoclonal
Isotype	IgG1
Applications	FCM
Reactivity	Human, Chimpanzee

References (9)
 Package
 100 test

PRODUCT

Summary

The UCHL1 antibody reacts with the human CD45 isoform known as CD45RO, a protein tyrosine phosphatase of ≥ 220 kDa. CD45 is one of the most abundant hematopoietic markers, and is expressed on all leukocytes (the Leukocyte Common Antigen, LCA). Various isoforms are generated and expressed in cell-specific patterns. With their broad cell distribution, CD45 isoforms are critical for many leukocyte functions, regulating signal transduction and cell activation associated with the T cell receptor, B cell receptor, and IL-2 receptor. Other forms of CD45, with restricted cellular expression, include CD45R (B220), CD45RA and CD45RB.

Applications

Application Note

*Optimal dilutions/concentrations should be determined by the researcher.

Suggested dilution

Recommended dilution

FCM	0.06 μg (5 μl) for 10^5 - 10^8 cells in 100 μl sample per test
-----	--

Not tested in other applications.

Product Note

This antibody reacts with the epsilon chain of the CD3 complex.

Properties

Form	Liquid
-------------	--------

Buffer	10mM NaH ₂ PO ₄ , 150mM NaCl, 0.1% Gelatin
---------------	--

Preservative	0.09% Sodium azide
---------------------	--------------------

Storage	Store as concentrated solution. Centrifuge briefly prior to opening vial. Store at 4°C. DO NOT FREEZE. Protect from light.
----------------	--

Concentration	0.012 mg/ml (Please refer to the vial label for the specific concentration.)
----------------------	--

Immunogen	human thymocytes followed by Sezary T cells
------------------	---

Purification	Purified by affinity chromatography From tissue culture supernatant
---------------------	--

Conjugation	Phycoerythrin (PE) Wavelength
--------------------	---



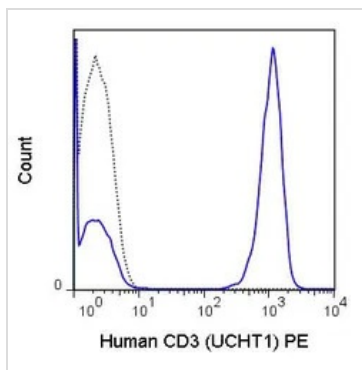
For full product information, images and publications, please visit our [website](#).

For laboratory research use only. Not for any clinical, therapeutic, or diagnostic use in humans or animals. Not for animal or human consumption.

Note

Purchasers shall not, and agree not to enable third parties to, analyze, copy, reverse engineer or otherwise attempt to determine the structure or sequence of the product.

DATA IMAGES

**GTX76169 FCM Image**

FACS analysis of human peripheral blood lymphocytes using GTX76169 CD3 epsilon antibody [UCHT1] (PE).

Solid line : Primary antibody

Dashed line : FITC mouse IgG1 isotype control

Antibody amount : 0.06 μ g



For full product information, images and publications, please visit our [website](#).