

CD41 antibody [PM6/248] (PE)

Cat. No. GTX76179

| | |
|--------------|-------------------------------|
| Host | Mouse |
| Clonality | Monoclonal |
| Isotype | IgG1 |
| Applications | FCM |
| Reactivity | Human, Baboon, Mink, Mustelid |

Package
100 test

Applications

Application Note

*Optimal dilutions/concentrations should be determined by the researcher.

| Suggested dilution | Recommended dilution |
|--------------------|----------------------|
| FCM | Neat |

Note : Use 10µl of the suggested working dilution to label 10⁶ cells or 100µl whole blood.

Not tested in other applications.

Product Note The recognition of this antibody is dependent upon an intact CD41/61 complex.

Properties

| | |
|---------------|--|
| Form | Liquid |
| Buffer | PBS, 1% BSA, 5% Sucrose |
| Preservative | 0.09% Sodium azide |
| Storage | Store as concentrated solution. Centrifuge briefly prior to opening vial. Store at 4°C. DO NOT FREEZE. Protect from light. |
| Concentration | Batch dependent (Please refer to the vial label for the specific concentration.) |
| Immunogen | Human platelet plasma membranes. |
| Purification | Protein A purified |
| Conjugation | Phycoerythrin (PE) Wavelength |

Note

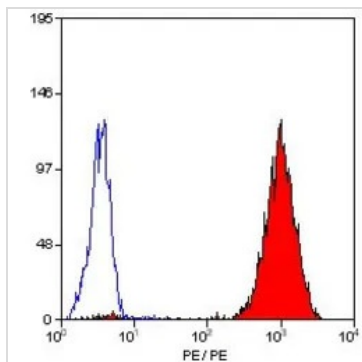
For laboratory research use only. Not for any clinical, therapeutic, or diagnostic use in humans or animals. Not for animal or human consumption.

Purchasers shall not, and agree not to enable third parties to, analyze, copy, reverse engineer or otherwise attempt to determine the structure or sequence of the product.



For full product information, images and publications, please visit our [website](#).

DATA IMAGES



GTX76179 FCM Image

FACS analysis of human peripheral blood platelets using GTX76179 CD41 antibody [PM6/248] (PE).



For full product information, images and publications, please visit our [website](#).