

## CD9 antibody [MM2/57] (PE)

**Cat. No. GTX76186**

<b>Host</b>	Mouse
<b>Clonality</b>	Monoclonal
<b>Isotype</b>	IgG2b
<b>Applications</b>	WB, IHC-P, FCM, IP, Blocking
<b>Reactivity</b>	Human, Mouse, Rat, Rabbit, Bovine, Cat, Dog, Pig, Ferret, Horse, Llama, Mink, Rhesus Monkey

References ( 17 )

Package

100 test

## Applications

**Application Note**

\*Optimal dilutions/concentrations should be determined by the researcher.

Suggested dilution	Recommended dilution
WB	Assay dependent
IHC-P	Assay dependent
FCM	Neat-1/2
IP	Assay dependent
Blocking	Assay dependent

**Note : Use 10µl of the suggested working dilution to label 10<sup>6</sup> cells or 100µl whole blood.**

Not tested in other applications.

**Calculated MW** 25 kDa. ( [Note](#) )**Product Note** This antibody recognizes a conserved epitope on CD9 present on a wide range of mammalian species.

## Properties

<b>Form</b>	Liquid
<b>Buffer</b>	PBS, 1% BSA, 5% Sucrose
<b>Preservative</b>	0.09% Sodium azide
<b>Storage</b>	Store as concentrated solution. Centrifuge briefly prior to opening vial. Store at 4°C. DO NOT FREEZE. Protect from light.
<b>Concentration</b>	Batch dependent (Please refer to the vial label for the specific concentration.)
<b>Immunogen</b>	Human platelet membranes.
<b>Purification</b>	Protein A purified From tissue culture supernatant



For full product information, images and publications, please visit our [website](#).

**Conjugation**

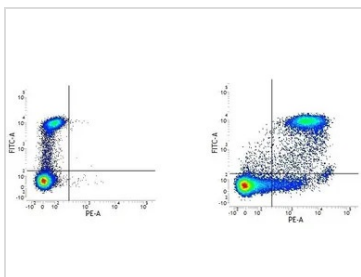
Phycoerythrin (PE) [Wavelength](#)

**Note**

For laboratory research use only. Not for any clinical, therapeutic, or diagnostic use in humans or animals. Not for animal or human consumption.

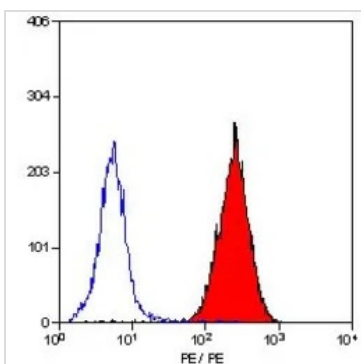
Purchasers shall not, and agree not to enable third parties to, analyze, copy, reverse engineer or otherwise attempt to determine the structure or sequence of the product.

DATA IMAGES



**GTX76186 FCM Image**

Figure A. FITC conjugated Mouse anti Human CD14 (GTX76340) and RPE conjugated Mouse IgG2b isotype control (GTX76401). Figure B. FITC conjugated Mouse anti Human CD14 (GTX76340) and RPE conjugated Mouse anti Human CD9 (GTX76186). All experiments performed on human peripheral blood mononuclear cells.



**GTX76186 FCM Image**

FACS analysis of human peripheral blood platelets using GTX76186 CD9 antibody [MM2/57] (PE).



For full product information, images and publications, please visit our [website](#).