

HLA-ABC antibody [YTH 862.2]

Cat. No. GTX76213

Host	Rat
Clonality	Monoclonal
Isotype	IgG2b
Applications	ICC/IF, IHC-Fr, FCM, IP, Activation
Reactivity	Human

Package
100 µg

Applications

Application Note

*Optimal dilutions/concentrations should be determined by the researcher.

Suggested dilution	Recommended dilution
ICC/IF	Assay dependent
IHC-Fr	Assay dependent
FCM	1/50-1/100
IP	Assay dependent
Activation	Assay dependent

Note : Use 10µl of the suggested working dilution to label 10⁶ cells in 100µl.

Rat anti Human HLA ABC antibody, clone YTH862.2 may be able to induce apoptosis in activated but not resting T cells (Genestier et al. 1997).

Not tested in other applications.

Product Note

This antibody recognizes a monomorphic determinant on the human HLA Class I heavy chain. Epitope analysis has shown that this antibody binds in the alpha1 domain. Clone YTH862.2 may be able to induce apoptosis in activated but not resting T cells (Genestier et al. 1997).

Properties

Form	Liquid
Buffer	PBS
Preservative	0.09% Sodium azide
Storage	Store as concentrated solution. Centrifuge briefly prior to opening vial. For short-term storage (1-2 weeks), store at 4°C. For long-term storage, aliquot and store at -20°C or below. Avoid multiple freeze-thaw cycles.
Concentration	1.0 mg/ml (Please refer to the vial label for the specific concentration.)
Immunogen	PHA activated human peripheral blood lymphocytes.



For full product information, images and publications, please visit our [website](#).

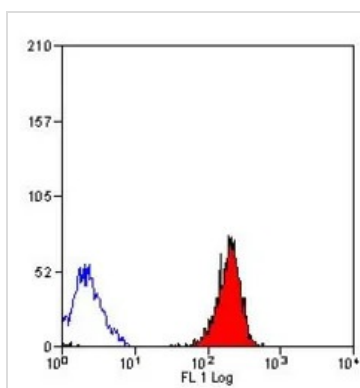
Purification
Protein G purified
From tissue culture supernatant

Conjugation
Unconjugated

Note
For laboratory research use only. Not for any clinical, therapeutic, or diagnostic use in humans or animals. Not for animal or human consumption.

Purchasers shall not, and agree not to enable third parties to, analyze, copy, reverse engineer or otherwise attempt to determine the structure or sequence of the product.

DATA IMAGES



GTX76213 FCM Image

FACS analysis of human peripheral blood lymphocytes using GTX76213 HLA-ABC antibody [YTH 862.2].



For full product information, images and publications, please visit our [website](#).