

Mouse Anti-Rat kappa Light chain antibody [MRC OX-12] (FITC)

Cat. No. GTX76232

Host	Mouse
Clonality	Monoclonal
Isotype	IgG2a
Applications	FCM
Reactivity	Rat

Package
100 µg

Applications

Application Note

For FACS: Use at an assay dependent dilution. Optimal dilutions/concentrations should be determined by the end user.

Product Note Recognizes a determinant on rat kappa chains and binds preferentially to the Ig-1b allotype.

Properties

Form	Liquid
Buffer	PBS, BSA
Preservative	0.02% Sodium azide
Storage	Store as concentrated solution. Centrifuge briefly prior to opening vial. For short-term storage (1-2 weeks), store at 4°C. For long-term storage, aliquot and store at -20°C or below. Avoid multiple freeze-thaw cycles. Protect from light.
Concentration	0.1 mg/ml (Please refer to the vial label for the specific concentration.)
Immunogen	Pooled rat serum IgG
Purification	Protein G affinity purified
Conjugation	Fluorescein isothiocyanate (FITC) Wavelength

Note

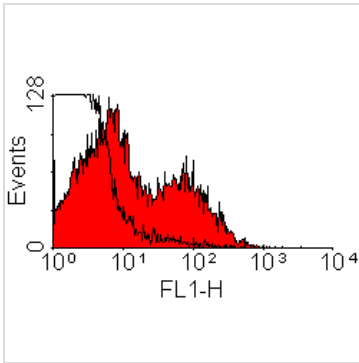
For laboratory research use only. Not for any clinical, therapeutic, or diagnostic use in humans or animals. Not for animal or human consumption.

Purchasers shall not, and agree not to enable third parties to, analyze, copy, reverse engineer or otherwise attempt to determine the structure or sequence of the product.



For full product information, images and publications, please visit our [website](#).

DATA IMAGES



GTX76232 FCM Image

Staining of rat splenic lymphocytes with Mouse anti Rat kappa light chains (GTX76234)



For full product information, images and publications, please visit our [website](#).