

# Mouse Anti-Rat kappa Light chain antibody [MRC OX-12]

**Cat. No. GTX76234**

<b>Host</b>	Mouse
<b>Clonality</b>	Monoclonal
<b>Isotype</b>	IgG2a
<b>Applications</b>	WB, FCM
<b>Reactivity</b>	Rat

**Package**  
250 µg

## Applications

### Application Note

For FACS: Use 0.05 µg-0.1 µg to label 10<sup>6</sup> cells. Optimal dilutions/concentrations should be determined by the end user.

**Product Note** Recognizes a determinant on rat kappa chains and binds preferentially to the Ig-1b allotype.

## Properties

<b>Form</b>	Liquid
<b>Buffer</b>	PBS
<b>Preservative</b>	0.02% Sodium azide
<b>Storage</b>	Store as concentrated solution. Centrifuge briefly prior to opening vial. For short-term storage (1-2 weeks), store at 4°C. For long-term storage, aliquot and store at -20°C or below. Avoid multiple freeze-thaw cycles.
<b>Concentration</b>	1.0 mg/ml (Please refer to the vial label for the specific concentration.)
<b>Immunogen</b>	Pooled rat serum IgG
<b>Purification</b>	Protein G affinity purified
<b>Conjugation</b>	Unconjugated

**Note**

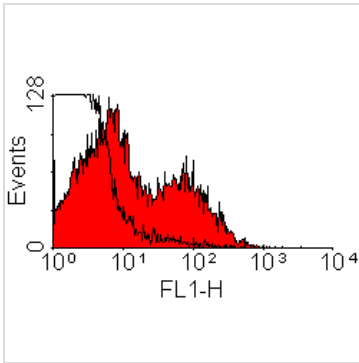
For laboratory research use only. Not for any clinical, therapeutic, or diagnostic use in humans or animals. Not for animal or human consumption.

Purchasers shall not, and agree not to enable third parties to, analyze, copy, reverse engineer or otherwise attempt to determine the structure or sequence of the product.



For full product information, images and publications, please visit our [website](#).

## DATA IMAGES



### GTX76234 FCM Image

Staining of rat splenic lymphocytes with Mouse anti Rat kappa light chains (GTX76234)



For full product information, images and publications, please visit our [website](#).