

CD18 antibody [YFC118.3]

Cat. No. GTX76238

Host	Rat
Clonality	Monoclonal
Isotype	IgG2b
Applications	IHC-Fr, FCM, IP
Reactivity	Human, Dog, Guinea pig

References (1)

Package

100 µg

Applications

Application Note

*Optimal dilutions/concentrations should be determined by the researcher.

Suggested dilution	Recommended dilution
IHC-Fr	1/1,000-1/5,000
FCM	1/50-1/100
IP	Assay dependent

Note : The epitope recognised by this antibody is reported to be sensitive to formaldehyde fixation and tissue processing. We recommends the use of acetone fixation for frozen sections.

Use 10µl of the suggested working dilution to label 10⁶ cells in 100µl.

Not tested in other applications.

Product Note Clone YFC118.3 is a strong reactivity with Leucocytes (platelets negative).

Properties

Form	Liquid
Buffer	PBS
Preservative	0.09% Sodium azide
Storage	Store as concentrated solution. Centrifuge briefly prior to opening vial. For short-term storage (1-2 weeks), store at 4°C. For long-term storage, aliquot and store at -20°C or below. Avoid multiple freeze-thaw cycles.
Concentration	1 mg/ml (Please refer to the vial label for the specific concentration.)
Immunogen	Human neutrophils.
Purification	Purified IgG
Conjugation	Unconjugated



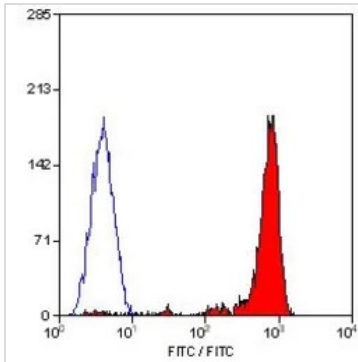
For full product information, images and publications, please visit our [website](#).

For laboratory research use only. Not for any clinical, therapeutic, or diagnostic use in humans or animals. Not for animal or human consumption.

Note

Purchasers shall not, and agree not to enable third parties to, analyze, copy, reverse engineer or otherwise attempt to determine the structure or sequence of the product.

DATA IMAGES

**GTX76238 FCM Image**

FACS analysis of human peripheral blood lymphocytes using GTX76238 CD18 antibody [YFC118.3].



For full product information, images and publications, please visit our [website](#).