

CD18 antibody [YFC118.3] (PE)

Cat. No. GTX76239

Host	Rat
Clonality	Monoclonal
Isotype	IgG2b
Applications	IHC-Fr, FCM
Reactivity	Human, Dog, Guinea pig

References (1)
 Package
 100 test

Applications

Application Note

*Optimal dilutions/concentrations should be determined by the researcher.

Suggested dilution	Recommended dilution
IHC-Fr	Assay dependent
FCM	Neat

Note : Use 10µl of the suggested working dilution to label 10⁶ cells or 100µl whole blood.

Not tested in other applications.

Product Note Clone YFC118.3 is a strong reactivity with Leucocytes (platelets negative).

Properties

Form	Liquid
Buffer	PBS, 1% BSA, 5% Sucrose
Preservative	0.09% Sodium azide
Storage	Store as concentrated solution. Centrifuge briefly prior to opening vial. Store at 4°C. DO NOT FREEZE. Protect from light.
Concentration	Batch dependent (Please refer to the vial label for the specific concentration.)
Immunogen	Human neutrophils.
Purification	Protein G purified
Conjugation	Phycoerythrin (PE) Wavelength

Note

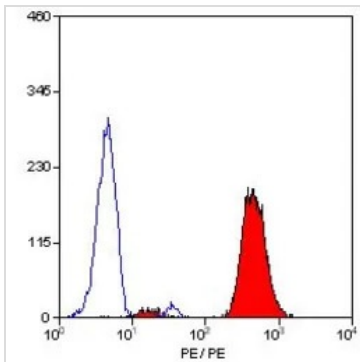
For laboratory research use only. Not for any clinical, therapeutic, or diagnostic use in humans or animals. Not for animal or human consumption.

Purchasers shall not, and agree not to enable third parties to, analyze, copy, reverse engineer or otherwise attempt to determine the structure or sequence of the product.



For full product information, images and publications, please visit our [website](#).

DATA IMAGES

**GTX76239 FCM Image**

FACS analysis of human peripheral blood granulocytes using GTX76239 CD18 antibody [YFC118.3] (PE).



For full product information, images and publications, please visit our [website](#).