

## MHC Class I RT1A antibody [MRC OX-18] (FITC)

**Cat. No. GTX76263**

<b>Host</b>	Mouse
<b>Clonality</b>	Monoclonal
<b>Isotype</b>	IgG1
<b>Applications</b>	FCM
<b>Reactivity</b>	Rat

References ( 1 )

Package

100 µg

## Applications

**Application Note**

\*Optimal dilutions/concentrations should be determined by the researcher.

Suggested dilution	Recommended dilution
FCM	1 µg for 10 <sup>6</sup> cells

Not tested in other applications.

**Product Note** Rat RT1a

## Properties

<b>Form</b>	Liquid
<b>Buffer</b>	PBS, BSA
<b>Preservative</b>	0.02% Sodium azide
<b>Storage</b>	Store as concentrated solution. Centrifuge briefly prior to opening vial. For short-term storage (1-2 weeks), store at 4°C. For long-term storage, aliquot and store at -20°C or below. Avoid multiple freeze-thaw cycles. Protect from light.
<b>Concentration</b>	0.1 mg/ml (Please refer to the vial label for the specific concentration.)
<b>Immunogen</b>	Rat spleen cell glycoprotein
<b>Purification</b>	Protein G affinity purified
<b>Conjugation</b>	Fluorescein isothiocyanate (FITC) <a href="#">Wavelength</a>

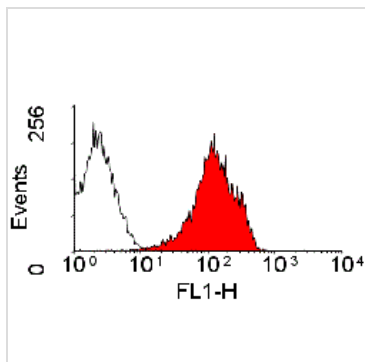
**Note**

For laboratory research use only. Not for any clinical, therapeutic, or diagnostic use in humans or animals. Not for animal or human consumption.

Purchasers shall not, and agree not to enable third parties to, analyze, copy, reverse engineer or otherwise attempt to determine the structure or sequence of the product.

For full product information, images and publications, please visit our [website](#).

DATA IMAGES



**GTX76263 FCM Image**

Staining of rat spleen cells with Mouse anti Rat MHC Class I (RT1A) Monomorphic: FITC (GTX76263)



For full product information, images and publications, please visit our [website](#).