

MHC Class I RT1A antibody [MRC OX-18]

Cat. No. GTX76264

Host	Mouse
Clonality	Monoclonal
Isotype	IgG1
Applications	ICC/IF, IHC-Fr, FCM, IP, ELISA
Reactivity	Rat

References (1)

Package

250 µg

Applications

Application Note

For FACS: Use a suggested dilution of 1:50 - 1:100. For FACS, IHC-Fr, and IP: Use at an assay dependent dilution. Not suitable for use in IHC-P. Not yet tested in other applications. Optimal concentrations/dilutions should be determined by the researcher.

Product Note Rat RT1a

Properties

Form	Liquid
Buffer	PBS
Preservative	0.02% Sodium azide
Storage	Store as concentrated solution. Centrifuge briefly prior to opening vial. For short-term storage (1-2 weeks), store at 4°C. For long-term storage, aliquot and store at -20°C or below. Avoid multiple freeze-thaw cycles.
Concentration	1.0 mg/ml (Please refer to the vial label for the specific concentration.)
Immunogen	Rat spleen cell glycoprotein
Purification	Protein G affinity purified
Conjugation	Unconjugated

Note

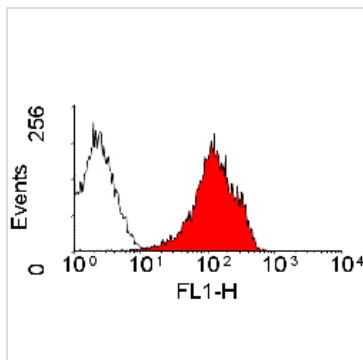
For laboratory research use only. Not for any clinical, therapeutic, or diagnostic use in humans or animals. Not for animal or human consumption.

Purchasers shall not, and agree not to enable third parties to, analyze, copy, reverse engineer or otherwise attempt to determine the structure or sequence of the product.



For full product information, images and publications, please visit our [website](#).

DATA IMAGES



GTX76264 FCM Image

Staining of rat spleen cells with Mouse anti Rat MHC Class I (RT1A) Monomorphic: FITC (GTX76263)



For full product information, images and publications, please visit our [website](#).