

CD11b antibody [ICRF44]

Cat. No. GTX76293

Host	Mouse
Clonality	Monoclonal
Isotype	IgG1
Application	IHC-Fr, FACS, IP
Reactivity	Human, Baboon, Cynomolgus monkey, Rhesus Monkey

Package
100 µg

APPLICATION

Application Note

*Optimal dilutions/concentrations should be determined by the researcher.

Suggested dilution	Recommended dilution
IHC-Fr	1/100-1/1,000
FACS	1/10-1/100
IP	Assay dependent

Note : The epitope recognised by this antibody is reported to be sensitive to formaldehyde fixation and tissue processing. We recommends the use of acetone fixation for frozen sections.

Use 10µl of the suggested working dilution to label 10⁶ cells or 100µl whole blood.

Not tested in other applications.

Calculated MW 127 kDa. ([Note](#))

PROPERTIES

Form	Liquid
Buffer	PBS, 0.09% Sodium Azide
Storage	Store as concentrated solution. Centrifuge briefly prior to opening vial. For short-term storage (1-2 weeks), store at 4°C. For long-term storage, aliquot and store at -20°C or below. Avoid multiple freeze-thaw cycles.
Concentration	1 mg/ml (Please refer to the vial label for the specific concentration.)
Immunogen	Rheumatoid synovial cells and human monocytes.
Purification	Protein G purified From tissue culture supernatant
Conjugation	Unconjugated

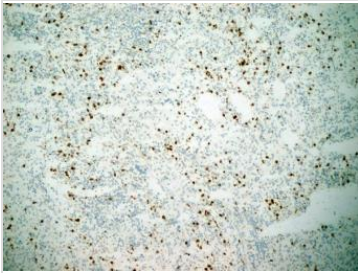


For full product information, images and publications, please visit our [website](#).

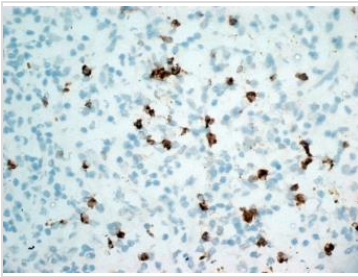
For laboratory research use only. Not for any clinical, therapeutic, or diagnostic use in humans or animals. Not for animal or human consumption.

Note

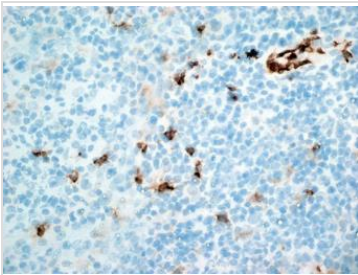
Purchasers shall not, and agree not to enable third parties to, analyze, copy, reverse engineer or otherwise attempt to determine the structure or sequence of the product.

DATA IMAGES

GTX76293 IHC-Fr Image

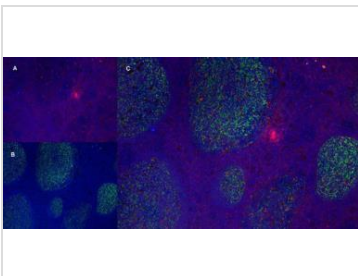
IHC-Fr analysis of human spleen tissue using GTX76293 CD11b antibody [ICRF44].


GTX76293 IHC-Fr Image

IHC-Fr analysis of human spleen tissue using GTX76293 CD11b antibody [ICRF44].


GTX76293 IHC-Fr Image

IHC-Fr analysis of human spleen tissue using GTX76293 CD11b antibody [ICRF44].


GTX76293 IHC-Fr Image

IHC-Fr analysis of mouse lymph node using CD11b antibody [ICRF44] (Red), CD21 antibody [YTS105.18] (Green, GTX74728) and DAPI (blue).



For full product information, images and publications, please visit our [website](#).