

CD43 antibody [DFT-1] (PE)

Cat. No. GTX76311

Host	Mouse
Clonality	Monoclonal
Isotype	IgG1
Application	FACS
Reactivity	Human

Package
100 test

APPLICATION

Application Note

*Optimal dilutions/concentrations should be determined by the researcher.

Suggested dilution	Recommended dilution
FACS	Neat

Note : Use 10µl of the suggested working dilution to label 10⁶ cells or 100µl whole blood.

Not tested in other applications.

Calculated MW	40 kDa. (Note)
Product Note	This antibody binds to both glycoforms of human CD43 (Kyoizumi et al. 2004)

PROPERTIES

Form	Liquid
Buffer	PBS, 1% BSA, 5% Sucrose
Preservative	0.09% Sodium azide
Storage	Store as concentrated solution. Centrifuge briefly prior to opening vial. Store at 4°C. DO NOT FREEZE. Protect from light.
Concentration	Batch dependent (Please refer to the vial label for the specific concentration.)
Immunogen	KG-1 cells.
Purification	Protein G purified From tissue culture supernatant
Conjugation	Phycoerythrin (PE)

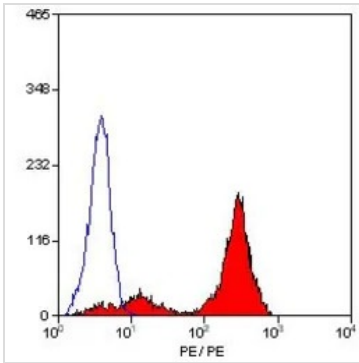
Note

For laboratory research use only. Not for any clinical, therapeutic, or diagnostic use in humans or animals. Not for animal or human consumption.

Purchasers shall not, and agree not to enable third parties to, analyze, copy, reverse engineer or otherwise attempt to determine the structure or sequence of the product.



For full product information, images and publications, please visit our [website](#).

DATA IMAGES

GTX76311 FACS Image

FACS analysis of human peripheral blood lymphocytes using GTX76311 CD43 antibody [DFT-1] (PE).



For full product information, images and publications, please visit our [website](https://www.genetex.com).