

Integrin alpha 6 antibody [NKI-GoH3]

Cat. No. GTX76413

Host	Rat
Clonality	Monoclonal
Isotype	IgG2a
Applications	IHC-Fr, FCM, IP, Blocking, IHC
Reactivity	Human, Mouse, Dog, Monkey

References (5)

Package

100 µg

Applications

Application Note

*Optimal dilutions/concentrations should be determined by the researcher.

Suggested dilution	Recommended dilution
IHC-Fr	Assay dependent
FCM	Assay dependent
IP	Assay dependent
Blocking	Assay dependent
IHC	Assay dependent

Not tested in other applications.

Product Note human CD49f

Properties

Form	Liquid
Buffer	PBS
Preservative	No preservatives
Storage	Store as concentrated solution. Centrifuge briefly prior to opening vial. For short-term storage (1-2 weeks), store at 4°C. For long-term storage, aliquot and store at -20°C or below. Avoid multiple freeze-thaw cycles.
Concentration	1 mg/ml (Please refer to the vial label for the specific concentration.)
Immunogen	BALB/c mouse mammary tumour cells
Purification	Purified by affinity chromatography
Conjugation	Unconjugated

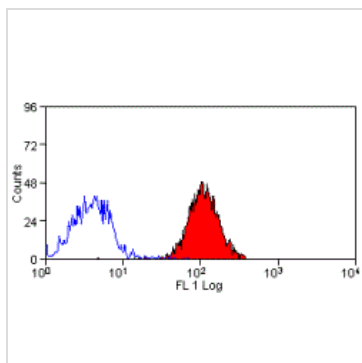


For full product information, images and publications, please visit our [website](#).

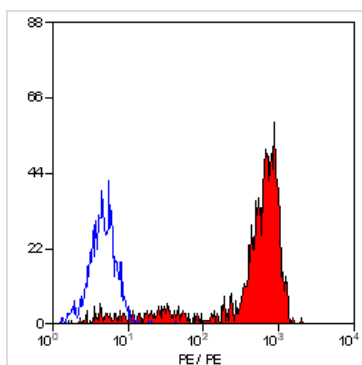
For laboratory research use only. Not for any clinical, therapeutic, or diagnostic use in humans or animals. Not for animal or human consumption.

Note

Purchasers shall not, and agree not to enable third parties to, analyze, copy, reverse engineer or otherwise attempt to determine the structure or sequence of the product.

DATA IMAGES

GTx76413 FCM Image

Staining of human peripheral blood platelets with Rat anti Human CD49f:Biotin


GTx76413 FCM Image

Staining of human peripheral blood lymphocytes with Rat anti Human CD49f:Biotin



For full product information, images and publications, please visit our [website](#).