

## CD3 antibody [1F4]

Cat. No. GTX76493

Host	Mouse
Clonality	Monoclonal
Isotype	IgM
Applications	WB, IHC-P, IHC-Fr, FCM, IP
Reactivity	Rat

References ( 2 )

Package

100 µg

## Applications

## Application Note

\*Optimal dilutions/concentrations should be determined by the researcher.

Suggested dilution	Recommended dilution
WB	Assay dependent
IHC-P	1/10
IHC-Fr	1/10-1/25
FCM	1/10-1/25
IP	Assay dependent

**Note : Use 10µl of the suggested working dilution to label 10<sup>6</sup> cells or 100µl whole blood.**

Not tested in other applications.

**Product Note** In immunohistology it stains rat thymus tissues strongly in the medulla and weakly in the cortex.

## Properties

Form	Liquid
Buffer	PBS
Preservative	0.09% Sodium azide
Storage	Store as concentrated solution. Centrifuge briefly prior to opening vial. For short-term storage (1-2 weeks), store at 4°C. For long-term storage, aliquot and store at -20°C or below. Avoid multiple freeze-thaw cycles.
Concentration	1.0 mg/ml (Please refer to the vial label for the specific concentration.)
Immunogen	F344 strain rat T cells stimulated with PMA (TPA) and calcium ionophore
Purification	Ammonium sulphate precipitation From tissue culture supernatant
Conjugation	Unconjugated



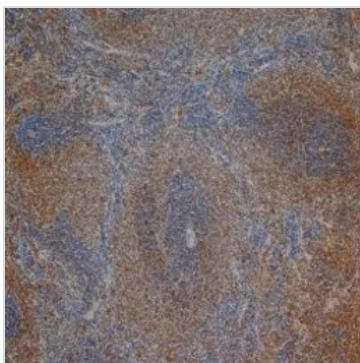
For full product information, images and publications, please visit our [website](#).

## Note

For laboratory research use only. Not for any clinical, therapeutic, or diagnostic use in humans or animals. Not for animal or human consumption.

Purchasers shall not, and agree not to enable third parties to, analyze, copy, reverse engineer or otherwise attempt to determine the structure or sequence of the product.

## DATA IMAGES



### GTX76493 IHC-P Image

IHC-P analysis of rat spleen tissue using GTX76493 CD3 antibody [1F4].



For full product information, images and publications, please visit our [website](#).