

CD11a antibody [WT.1]

Cat. No. GTX76502

Host	Mouse
Clonality	Monoclonal
Isotype	IgG2a
Applications	IHC-Fr, FCM, IP
Reactivity	Rat

Package
250 µg

Applications

Application Note

Flow cytometry, immunohistology, immunoprecipitation; Flow Cytometry: Use 10ul of the suggested working dilution to label 10⁶ cells in 100ul.

Product Note rat CD11a

Properties

Form	Liquid
Buffer	PBS
Preservative	0.1% Sodium azide
Storage	Store as concentrated solution. Centrifuge briefly prior to opening vial. For short-term storage (1-2 weeks), store at 4°C. For long-term storage, aliquot and store at -20°C or below. Avoid multiple freeze-thaw cycles.
Concentration	1 mg/ml (Please refer to the vial label for the specific concentration.)
Immunogen	Splenic PHA blasts
Purification	Purified IgG
Conjugation	Unconjugated

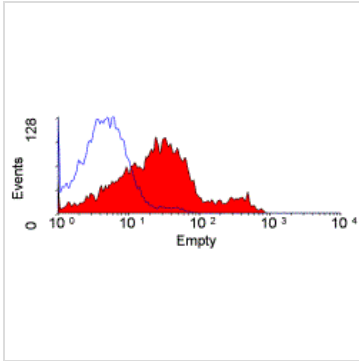
Note

For laboratory research use only. Not for any clinical, therapeutic, or diagnostic use in humans or animals. Not for animal or human consumption.

Purchasers shall not, and agree not to enable third parties to, analyze, copy, reverse engineer or otherwise attempt to determine the structure or sequence of the product.



For full product information, images and publications, please visit our [website](#).

DATA IMAGES

GTX76502 FCM Image

Staining of rat splenocytes with Mouse anti Rat CD11a: Azide Free (GTX76506)



For full product information, images and publications, please visit our [website](#).