

CD20 antibody [FMC7] (FITC)

Cat. No. GTX76519

Host	Mouse
Clonality	Monoclonal
Isotype	IgM
Applications	FCM
Reactivity	Human

Package
500 µl

Applications

Application Note

*Optimal dilutions/concentrations should be determined by the researcher.

Suggested dilution	Recommended dilution
FCM	Neat

Note : Use 10µl of the suggested working dilution to label 10⁶ cells or 100µl whole blood.

Not tested in other applications.

Product Note This antibody recognises a conformational epitope on the CD20 molecule, most likely a multimeric complex of CD20.

Properties

Form	Liquid
Buffer	Tris-Glycine, 0.2% BSA
Preservative	0.1% Sodium azide
Storage	Store as concentrated solution. Centrifuge briefly prior to opening vial. For short-term storage (1-2 weeks), store at 4°C. For long-term storage, aliquot and store at -20°C or below. Avoid multiple freeze-thaw cycles. Protect from light.
Concentration	Batch dependent (Please refer to the vial label for the specific concentration.)
Immunogen	HR1K cells - Human B-Lymphoblastoid line
Purification	Purified by gel filtration
Conjugation	Fluorescein isothiocyanate (FITC) Wavelength

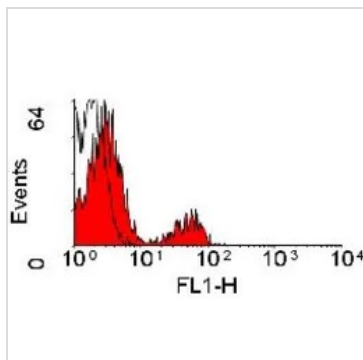
Note

For laboratory research use only. Not for any clinical, therapeutic, or diagnostic use in humans or animals. Not for animal or human consumption.

Purchasers shall not, and agree not to enable third parties to, analyze, copy, reverse engineer or otherwise attempt to determine the structure or sequence of the product.



For full product information, images and publications, please visit our [website](#).

DATA IMAGES

GTX76519 FCM Image

FACS analysis of human peripheral blood lymphocytes using GTX76519 CD20 antibody [FMC7] (FITC).



For full product information, images and publications, please visit our [website](#).