

TGF beta antibody [TB21]

Cat. No. GTX76527

Host	Mouse
Clonality	Monoclonal
Isotype	IgG1
Applications	WB, IHC-P, IHC-Fr, FCM, ELISA
Reactivity	Human, Mouse, Rat, Rabbit, Sheep, Bovine, Mink, Mustelid

References (14)

Package

100 µg

Applications

Application Note

*Optimal dilutions/concentrations should be determined by the researcher.

Suggested dilution	Recommended dilution
WB	Assay dependent
IHC-P	Assay dependent
IHC-Fr	Assay dependent
FCM	Assay dependent
ELISA	Assay dependent

Not tested in other applications.

Product Note

Western blotting demonstrated that this antibody reacts with the dimeric (25 kDa) and monomeric (12.5 kDa) forms of TGF-beta under both non-reducing and reducing conditions, respectively. This antibody recognizes both human platelet-derived and recombinant TGF-beta1.

Properties

Form	Liquid
Buffer	PBS
Preservative	0.09% Sodium azide
Storage	Store as concentrated solution. Centrifuge briefly prior to opening vial. For short-term storage (1-2 weeks), store at 4°C. For long-term storage, aliquot and store at -20°C or below. Avoid multiple freeze-thaw cycles.
Concentration	1.0 mg/ml (Please refer to the vial label for the specific concentration.)
Immunogen	Human Transforming Growth Factor Beta 1 from platelets.
Purification	Purified by affinity chromatography
Conjugation	Unconjugated



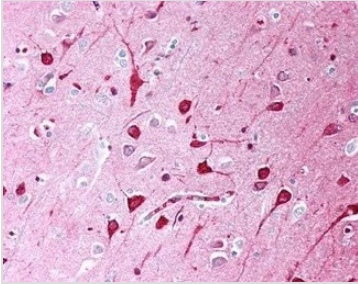
For full product information, images and publications, please visit our [website](#).

For laboratory research use only. Not for any clinical, therapeutic, or diagnostic use in humans or animals. Not for animal or human consumption.

Note

Purchasers shall not, and agree not to enable third parties to, analyze, copy, reverse engineer or otherwise attempt to determine the structure or sequence of the product.

DATA IMAGES

**GTX76527 IHC-P Image**

IHC analysis of human brain tissue using GTX76527 TGF beta antibody [TB21].



For full product information, images and publications, please visit our [website](#).