

CD1a antibody [NA1/34-HLK] (PE)

Cat. No. GTX76537

Host	Mouse
Clonality	Monoclonal
Isotype	IgG2a
Applications	FCM
Reactivity	Human, Dog, Cynomolgus monkey

Package
100 test

Applications

Application Note

*Optimal dilutions/concentrations should be determined by the researcher.

Suggested dilution	Recommended dilution
FCM	Neat

Note : Use 10 μ l of the suggested working dilution to label 10⁶ cells in 100 μ l.

Not tested in other applications.

Product Note This antibody recognizes the human CD1a cell surface glycoprotein.

Properties

Form	Liquid
Buffer	PBS, 1% BSA, 5% Sucrose
Preservative	0.09% Sodium azide
Storage	Store as concentrated solution. Centrifuge briefly prior to opening vial. Store at 4°C. DO NOT FREEZE. Protect from light.
Concentration	Batch dependent (Please refer to the vial label for the specific concentration.)
Immunogen	Human thymocytes
Purification	Purified by ion exchange chromatography
Conjugation	Phycoerythrin (PE) Wavelength

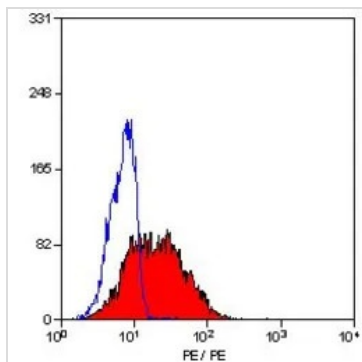
Note For laboratory research use only. Not for any clinical, therapeutic, or diagnostic use in humans or animals. Not for animal or human consumption.

Purchasers shall not, and agree not to enable third parties to, analyze, copy, reverse engineer or otherwise attempt to determine the structure or sequence of the product.



For full product information, images and publications, please visit our [website](#).

DATA IMAGES

**GTX76537 FCM Image**

FACS analysis of MOLT4 cells using GTX76537 CD1a antibody [NA1/34-HLK] (PE).



For full product information, images and publications, please visit our [website](#).