

Integrin alpha 4 antibody [44H6]

Cat. No. GTX76621

Host	Mouse
Clonality	Monoclonal
Isotype	IgG1
Applications	IHC-Fr, FCM
Reactivity	Human

Package
100 µg

Applications

Application Note

*Optimal dilutions/concentrations should be determined by the researcher.

Suggested dilution	Recommended dilution
IHC-Fr	1/50-1/100
FCM	1/40

Note : Overnight incubation is recommended. The epitope recognised by this antibody is reported to be sensitive to formaldehyde fixation and tissue processing. We recommends the use of acetone fixation for frozen sections.

Use 10µl of the suggested working dilution to label 100µl of human whole peripheral blood.

Not tested in other applications.

Properties

Form	Liquid
Buffer	PBS
Preservative	0.09% Sodium azide
Storage	Store as concentrated solution. Centrifuge briefly prior to opening vial. For short-term storage (1-2 weeks), store at 4°C. For long-term storage, aliquot and store at -20°C or below. Avoid multiple freeze-thaw cycles.
Concentration	1.0 mg/ml (Please refer to the vial label for the specific concentration.)
Immunogen	HOON pre-B leukaemia cell line.
Purification	Purified by ion exchange chromatography From tissue culture supernatant
Conjugation	Unconjugated

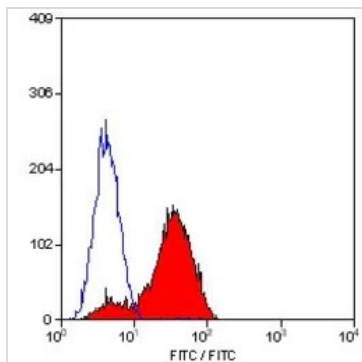
Note

For laboratory research use only. Not for any clinical, therapeutic, or diagnostic use in humans or animals. Not for animal or human consumption.

Purchasers shall not, and agree not to enable third parties to, analyze, copy, reverse engineer or otherwise attempt to determine the structure or sequence of the product.



For full product information, images and publications, please visit our [website](#).

DATA IMAGES

GTX76621 FCM Image

FACS analysis of human peripheral blood lymphocytes using GTX76621 Integrin alpha 4 antibody [44H6].



For full product information, images and publications, please visit our [website](#).

Date 2025 / 07 / 12 Page 2 of 2