

## CD8 beta antibody [341]

Cat. No. GTX76644

Host	Mouse
Clonality	Monoclonal
Isotype	IgG1
Applications	WB, FCM, IP
Reactivity	Rat

**Package**  
250 µg

## Applications

## Application Note

Flow cytometry, immunoprecipitation, WB; Flow Cytometry: Use 10ul of the suggested working dilution to label  $10^6$  cells in 100ul.

**Product Note** Rat CD8 Beta

## Properties

Form	Liquid
Buffer	PBS
Preservative	0.02% Sodium azide
Storage	Store as concentrated solution. Centrifuge briefly prior to opening vial. For short-term storage (1-2 weeks), store at 4°C. For long-term storage, aliquot and store at -20°C or below. Avoid multiple freeze-thaw cycles.
Concentration	1 mg/ml (Please refer to the vial label for the specific concentration.)
Immunogen	22
Purification	Protein G affinity purified
Conjugation	Unconjugated

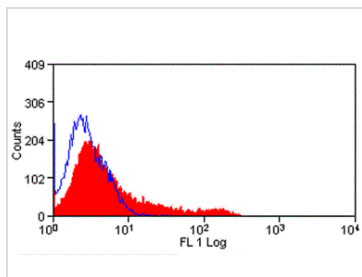
## Note

For laboratory research use only. Not for any clinical, therapeutic, or diagnostic use in humans or animals. Not for animal or human consumption.

Purchasers shall not, and agree not to enable third parties to, analyze, copy, reverse engineer or otherwise attempt to determine the structure or sequence of the product.



For full product information, images and publications, please visit our [website](#).

**DATA IMAGES**

**GTX76644 FCM Image**

Rat splenocytes stained with Mouse anti Rat CD8 Beta:FITC (GTX76645)



For full product information, images and publications, please visit our [website](#).