

HLA-B7 antibody [BB7.1] (FITC)

Cat. No. GTX76656

Host	Mouse
Clonality	Monoclonal
Isotype	IgG1
Applications	FCM
Reactivity	Human, Cynomolgus monkey

Package
100 µg

Applications

Application Note

*Optimal dilutions/concentrations should be determined by the researcher.

Suggested dilution	Recommended dilution
FCM	Neat-1/10

Note : Use 10µl of the suggested working dilution to label 10⁶ cells or 100µl whole blood.

Not tested in other applications.

Product Note

This antibody recognizes the HLA-B7 antigen and does not cross-react with HLA-B27 or other related antigens. It can be used to distinguish true HLA B27 positives from false HLA B27 positives (i.e. HLA B7 positive) in the investigation of diseases such as ankylosing spondylitis and anterior uveitis.

Properties

Form	Liquid
Buffer	PBS, 1% BSA
Preservative	0.09% Sodium azide
Storage	Store as concentrated solution. Centrifuge briefly prior to opening vial. For short-term storage (1-2 weeks), store at 4°C. For long-term storage, aliquot and store at -20°C or below. Avoid multiple freeze-thaw cycles. Protect from light.
Concentration	0.1 mg/ml (Please refer to the vial label for the specific concentration.)
Immunogen	Papain solubilized HLA-B7 antigen
Purification	Protein A purified From tissue culture supernatant
Conjugation	Fluorescein isothiocyanate (FITC) Wavelength

Note

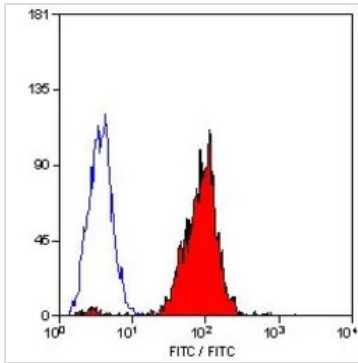
For laboratory research use only. Not for any clinical, therapeutic, or diagnostic use in humans or animals. Not for animal or human consumption.

Purchasers shall not, and agree not to enable third parties to, analyze, copy, reverse engineer or otherwise attempt to determine the structure or sequence of the product.



For full product information, images and publications, please visit our [website](#).

DATA IMAGES

**GTX76656 FCM Image**

FACS analysis of human peripheral blood lymphocytes using GTX76656 HLA-B7 antibody [BB7.1] (FITC).



For full product information, images and publications, please visit our [website](#).