

# MBD1 antibody [100B272.1]

**Cat. No. GTX76673**

<b>Host</b>	Mouse
<b>Clonality</b>	Monoclonal
<b>Isotype</b>	IgG1
<b>Applications</b>	WB, IP, ChIP assay
<b>Reactivity</b>	Human, Mouse

References ( 1 )

Package

100 µg

## Applications

### Application Note

\*Optimal dilutions/concentrations should be determined by the researcher.

Suggested dilution	Recommended dilution
WB	2 - 4 µg/ml
IP	Assay dependent
ChIP assay	1:10 - 1:500

Not tested in other applications.

**Calculated MW** 67 kDa. ( [Note](#) )

### Product Note

There are many isoforms of human MBD1 ranging from 503 (~ 55kD) to 655 (~ 71kD) amino acids in length. Researchers are encouraged to use the provided immunogen sequence to determine if this antibody is suitable for testing a specific isoform of interest.

## Properties

<b>Form</b>	Liquid
<b>Buffer</b>	PBS, 0.05% BSA
<b>Preservative</b>	0.05% Sodium azide
<b>Storage</b>	Store as concentrated solution. Centrifuge briefly prior to opening vial. For short-term storage (1-2 weeks), store at 4°C. For long-term storage, aliquot and store at -20°C or below. Avoid multiple freeze-thaw cycles.
<b>Concentration</b>	0.5 mg/ml (Please refer to the vial label for the specific concentration.)
<b>Immunogen</b>	This antibody was generated by immunizing mice with a synthetic peptide corresponding to amino acids 391-405 (SESEDGAGSPPPYRR) of human MBD1; GenBank no ref NP_056671.2
<b>Purification</b>	Protein G purified
<b>Conjugation</b>	Unconjugated



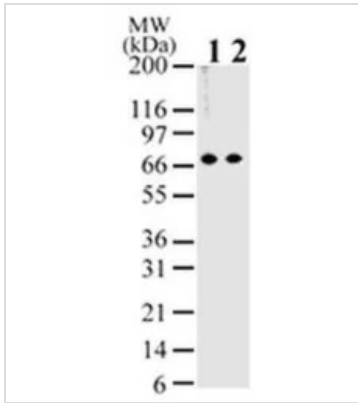
For full product information, images and publications, please visit our [website](#).

For laboratory research use only. Not for any clinical, therapeutic, or diagnostic use in humans or animals. Not for animal or human consumption.

## Note

Purchasers shall not, and agree not to enable third parties to, analyze, copy, reverse engineer or otherwise attempt to determine the structure or sequence of the product.

## DATA IMAGES



### GTX76673 WB Image

WB analysis of HeLa cell lysate using GTX76673 MBD1 antibody [100B272.1].

Lane 1 : 2 ug/ml primary antibody

Lane 2 : 1 ug/ml primary antibody



For full product information, images and publications, please visit our [website](#).