

Goat Anti-Mouse IgG antibody (DyLight680)

Cat. No. GTX76788

| | |
|--------------------|------------------------------|
| Host | Goat |
| Clonality | Polyclonal |
| Isotype | IgG |
| Application | WB, ICC/IF, IHC-Fr, FACS, IP |
| Reactivity | Mouse |

Package
500 µl

APPLICATION

Application Note

*Optimal dilutions/concentrations should be determined by the researcher.

| Suggested dilution | Recommended dilution |
|--------------------|----------------------|
| WB | Assay dependent |
| ICC/IF | Assay dependent |
| IHC-Fr | Assay dependent |
| FACS | Assay dependent |
| IP | Assay dependent |

Not tested in other applications.

Product Note

This antibody reacts with the heavy chains of mouse IgG and with the light chains common to most mouse immunoglobulins, but does not react against non-immunoglobulin serum proteins. However, this antibody may cross-react with immunoglobulins from other species.

PROPERTIES

| | |
|----------------------|---|
| Form | Liquid |
| Buffer | PBS, 1% BSA |
| Preservative | 0.02% Sodium azide |
| Storage | Store as concentrated solution. Centrifuge briefly prior to opening vial. Store at 4°C. Protect from light. |
| Concentration | 1 mg/ml (Please refer to the vial label for the specific concentration.) |
| Purification | Purified by antigen-affinity chromatography. |
| Conjugation | DyLight680 |



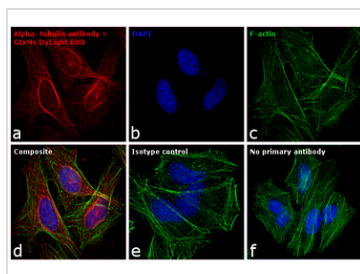
For full product information, images and publications, please visit our [website](#).

For laboratory research use only. Not for any clinical, therapeutic, or diagnostic use in humans or animals. Not for animal or human consumption.

Note

Purchasers shall not, and agree not to enable third parties to, analyze, copy, reverse engineer or otherwise attempt to determine the structure or sequence of the product.

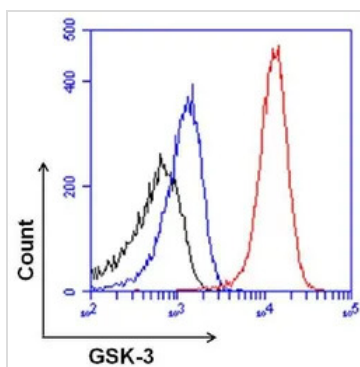
DATA IMAGES



GTx76788 ICC/IF Image

ICC/IF analysis of HeLa cells using alpha Tubulin Antibody and labeled with GTx76788 Mouse IgG antibody (DyLight680).

Red : Primary antibody labeled with GTx76788



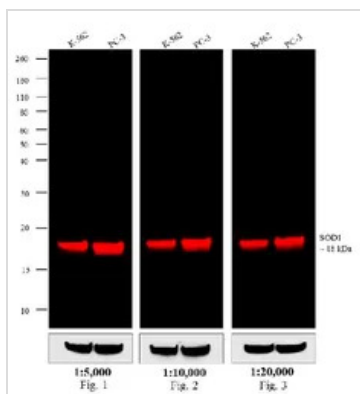
GTx76788 FACS Image

FACS analysis of permeabilized, fixed HeLa cells (red histogram) using GSK-3 monoclonal antibody and labeled with GTx76788 Mouse IgG antibody (DyLight680).

Red : Primary antibody with GTx76788

Black : unstained control cells

Blue : no-primary-antibody control



GTx76788 WB Image

WB analysis of whole cell extracts (30 µg lysate) of K-562 (Lane 1) and PC-3 (Lane 2) using SOD1 Antibody and labeled with GTx76788 Mouse IgG antibody (DyLight680).



For full product information, images and publications, please visit our [website](https://www.genetex.com).