

## Goat Anti-Rabbit IgG antibody (HRP)

Cat. No. GTX77060

Host	Goat
Clonality	Polyclonal
Isotype	IgG
Applications	WB, ELISA, IHC
Reactivity	Rabbit

References ( 4 )

Package

500 µg

## Applications

## Application Note

\*Optimal dilutions/concentrations should be determined by the researcher.

Suggested dilution	Recommended dilution
WB	0.5 - 0.05ug/ml
ELISA	0.1 - 0.01 ug/ml
IHC	1.0 - 5.0 ug/ml

Not tested in other applications.

## Properties

Form	Liquid
Buffer	50mM HEPES, stabilizer
Preservative	0.002% Thimerosal
Storage	Store as concentrated solution. Centrifuge briefly prior to opening vial. Store at 4°C.
Concentration	1 mg/ml (Please refer to the vial label for the specific concentration.)
Immunogen	Purified rabbit IgG
Purification	Purified by antigen-affinity chromatography
Conjugation	Horseradish peroxidase(HRP)

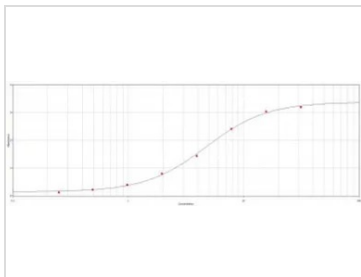
## Note

For laboratory research use only. Not for any clinical, therapeutic, or diagnostic use in humans or animals. Not for animal or human consumption.

Purchasers shall not, and agree not to enable third parties to, analyze, copy, reverse engineer or otherwise attempt to determine the structure or sequence of the product.



For full product information, images and publications, please visit our [website](#).

**DATA IMAGES**

**GTX77060 ELISA Image**

ELISA analysis of immunogen using GTX77060 Rabbit IgG antibody (HRP).



For full product information, images and publications, please visit our [website](#).