

# BSA antibody (HRP)

**Cat. No. GTX77112**

<b>Host</b>	Sheep
<b>Clonality</b>	Polyclonal
<b>Isotype</b>	IgG
<b>Applications</b>	WB, ELISA, IHC
<b>Reactivity</b>	Bovine

**Package**  
1 mg

## Applications

### Application Note

\*Optimal dilutions/concentrations should be determined by the researcher.

Suggested dilution	Recommended dilution
WB	0.5 - 0.05ug/ml
ELISA	0.1 - 0.01 ug/ml
IHC	1.0 - 5.0 ug/ml

Not tested in other applications.

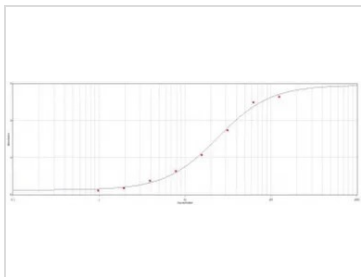
**Calculated MW** 69 kDa. ( [Note](#) )

## Properties

<b>Form</b>	Liquid
<b>Buffer</b>	50mM HEPES, 0.2% Ovalbumin
<b>Preservative</b>	0.002% Thimerosal
<b>Storage</b>	Store as concentrated solution. Centrifuge briefly prior to opening vial. Store at 4°C.
<b>Concentration</b>	1 mg/ml (Please refer to the vial label for the specific concentration.)
<b>Immunogen</b>	Sheep were immunized with highly purified Bovine Serum Albumin in Freund's adjuvant. After multiple immunizations, the sheep were bled and serum collected. The antibodies were isolated by immunoaffinity chromatography and conjugated with horseradish perox
<b>Purification</b>	Purified by antigen-affinity chromatography
<b>Conjugation</b>	Horseradish peroxidase(HRP)
<b>Note</b>	For laboratory research use only. Not for any clinical, therapeutic, or diagnostic use in humans or animals. Not for animal or human consumption.  Purchasers shall not, and agree not to enable third parties to, analyze, copy, reverse engineer or otherwise attempt to determine the structure or sequence of the product.



For full product information, images and publications, please visit our [website](#).

**DATA IMAGES**

**GTX77112 ELISA Image**

ELISA analysis of immunogen using GTX77112 BSA antibody (HRP).



For full product information, images and publications, please visit our [website](#).