

Haptoglobin antibody

Cat. No. GTX77180

Host	Goat
Clonality	Polyclonal
Isotype	IgG
Applications	WB, IP, ELISA
Reactivity	Bovine

Package
100 µg

Applications

Application Note

*Optimal dilutions/concentrations should be determined by the researcher.

Suggested dilution	Recommended dilution
WB	0.5 - 0.05 ug/ml
IP	2 ug/mg
ELISA	2 ug/ml

Not tested in other applications.

Calculated MW 45 kDa. ([Note](#))

Product Note The anti haptoglobin only reacts with a single protein in the serum from some cows, calves, bulls and steers. This protein has the molecular characteristics of bovine haptoglobin and weakly cross reacts with some anti human haptoglobin antibodies.

Properties

Form	Liquid
Buffer	PBS
Preservative	0.1% Sodium azide
Storage	Store as concentrated solution. Centrifuge briefly prior to opening vial. Store at 4°C.
Concentration	1 mg/ml (Please refer to the vial label for the specific concentration.)
Immunogen	Highly purified bovine haptoglobin
Purification	Purified by antigen-affinity chromatography
Conjugation	Unconjugated

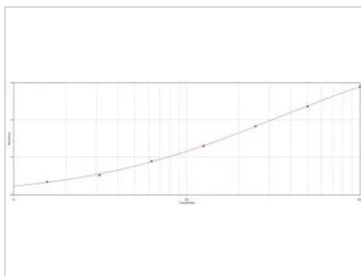


For full product information, images and publications, please visit our [website](#).

For laboratory research use only. Not for any clinical, therapeutic, or diagnostic use in humans or animals. Not for animal or human consumption.

Note

Purchasers shall not, and agree not to enable third parties to, analyze, copy, reverse engineer or otherwise attempt to determine the structure or sequence of the product.

DATA IMAGES

GTX77180 ELISA Image

ELISA analysis of immunogen using GTX77180 Haptoglobin antibody.



For full product information, images and publications, please visit our [website](#).