

# beta Lactoglobulin antibody

**Cat. No. GTX77272**

<b>Host</b>	Rabbit
<b>Clonality</b>	Polyclonal
<b>Isotype</b>	IgG
<b>Applications</b>	WB, ELISA, Functional Assay, Immunoelectrophoresis
<b>Reactivity</b>	Bovine

References ( 11 )

Package

1 ml

## PRODUCT

### Summary

beta-Lactoglobulin antibody was generated against the bovine beta-lactoglobulin protein, the primary whey component in ruminant milk. beta-Lactoglobulin is typically used as an internal reference standard for quantification of human plasma protein in enzyme-linked immunosorbent assays (ELISAs) and mass spectrometric immunoassays.

### Applications

### Application Note

Suggested starting dilutions are as follows: WB: 1:5000-1:20000, ELISA. Not yet tested in other applications. Optimal working dilutions should be determined experimentally by the end user.

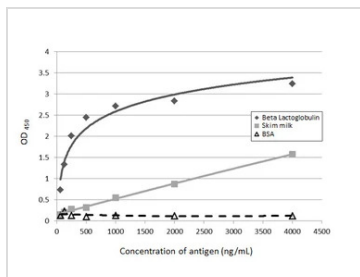
## Properties

<b>Form</b>	Liquid
<b>Buffer</b>	PBS
<b>Preservative</b>	0.1% Sodium azide
<b>Storage</b>	Store as concentrated solution. Centrifuge briefly prior to opening vial. For short-term storage (1-2 weeks), store at 4°C. For long-term storage, aliquot and store at -20°C or below. Avoid multiple freeze-thaw cycles.
<b>Concentration</b>	1 mg/ml (Please refer to the vial label for the specific concentration.)
<b>Immunogen</b>	Beta lactoglobulin extract from bovine milk.
<b>Purification</b>	Purified by antigen-affinity chromatography.
<b>Conjugation</b>	Unconjugated
<b>Note</b>	For laboratory research use only. Not for any clinical, therapeutic, or diagnostic use in humans or animals. Not for animal or human consumption.  Purchasers shall not, and agree not to enable third parties to, analyze, copy, reverse engineer or otherwise attempt to determine the structure or sequence of the product.



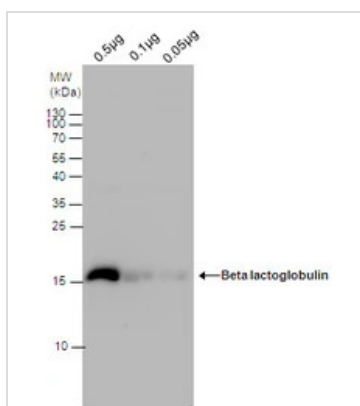
For full product information, images and publications, please visit our [website](#).

DATA IMAGES



**GTX77272 ELISA Image**

ELISA detection of Beta-lactoglobulin using GTX77272 for detection at a concentration of 0.2 µg/mL.



**GTX77272 WB Image**

Beta lactoglobulin antibody detects Beta lactoglobulin protein by Western blot analysis. Non-fat milk (0.5 µg and 0.1 µg and 0.05 µg) was separated by 15% SDS-PAGE, and the membrane was blotted with Beta lactoglobulin antibody (GTX77272) at a dilution of 1:10000.



For full product information, images and publications, please visit our [website](https://www.genetex.com).