

beta Lactoglobulin antibody

Cat. No. GTX77272

Host	Rabbit
Clonality	Polyclonal
Isotype	IgG
Applications	WB, ELISA, Functional Assay, Immunoelectrophoresis
Reactivity	Bovine

References (11)

Package

1 ml

PRODUCT

Summary

beta-Lactoglobulin antibody was generated against the bovine beta-lactoglobulin protein, the primary whey component in ruminant milk. beta-Lactoglobulin is typically used as an internal reference standard for quantification of human plasma protein in enzyme-linked immunosorbent assays (ELISAs) and mass spectrometric immunoassays.

Applications

Application Note

Suggested starting dilutions are as follows: WB: 1:5000-1:20000, ELISA. Not yet tested in other applications. Optimal working dilutions should be determined experimentally by the end user.

Properties

Form	Liquid
Buffer	PBS
Preservative	0.1% Sodium azide
Storage	Store as concentrated solution. Centrifuge briefly prior to opening vial. For short-term storage (1-2 weeks), store at 4°C. For long-term storage, aliquot and store at -20°C or below. Avoid multiple freeze-thaw cycles.
Concentration	1 mg/ml (Please refer to the vial label for the specific concentration.)
Immunogen	Beta lactoglobulin extract from bovine milk.
Purification	Purified by antigen-affinity chromatography.
Conjugation	Unconjugated

Note

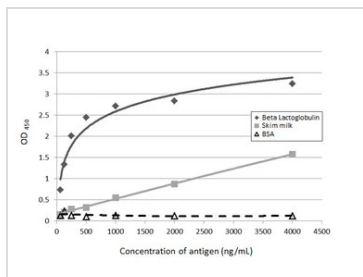
For laboratory research use only. Not for any clinical, therapeutic, or diagnostic use in humans or animals. Not for animal or human consumption.

Purchasers shall not, and agree not to enable third parties to, analyze, copy, reverse engineer or otherwise attempt to determine the structure or sequence of the product.



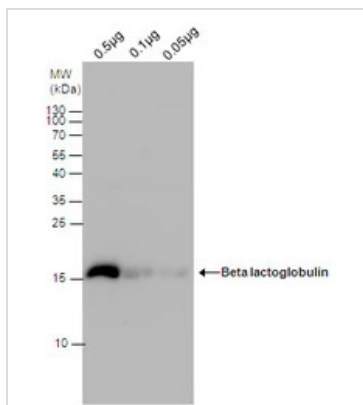
For full product information, images and publications, please visit our [website](#).

DATA IMAGES



GTX77272 ELISA Image

ELISA detection of Beta-lactoglobulin using GTX77272 for detection at a concentration of 0.2 µg/mL.



GTX77272 WB Image

Beta lactoglobulin antibody detects Beta lactoglobulin protein by Western blot analysis. Non-fat milk (0.5µg and 0.1µg and 0.05µg) was separated by 15% SDS-PAGE, and the membrane was blotted with Beta lactoglobulin antibody (GTX77272) at a dilution of 1:10000.



For full product information, images and publications, please visit our [website](#).