

## beta Lactoglobulin antibody

Cat. No. GTX77272

Host	Rabbit
Clonality	Polyclonal
Isotype	IgG
Applications	WB, ELISA, Functional Assay, Immunoelectrophoresis
Reactivity	Bovine

References ( 11 )

Package

1 ml

## PRODUCT

## Summary

beta-Lactoglobulin antibody was generated against the bovine beta-lactoglobulin protein, the primary whey component in ruminant milk. beta-Lactoglobulin is typically used as an internal reference standard for quantification of human plasma protein in enzyme-linked immunosorbent assays (ELISAs) and mass spectrometric immunoassays.

## Applications

## Application Note

Suggested starting dilutions are as follows: WB: 1:5000-1:20000, ELISA. Not yet tested in other applications. Optimal working dilutions should be determined experimentally by the end user.

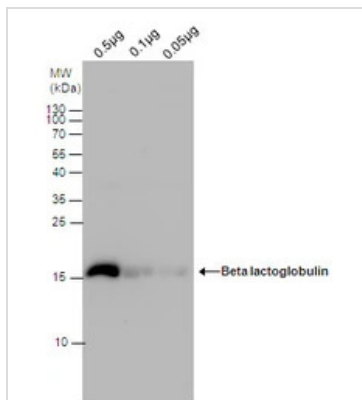
## Properties

Form	Liquid
Buffer	PBS
Preservative	0.1% Sodium azide
Storage	Store as concentrated solution. Centrifuge briefly prior to opening vial. For short-term storage (1-2 weeks), store at 4°C. For long-term storage, aliquot and store at -20°C or below. Avoid multiple freeze-thaw cycles.
Concentration	1 mg/ml (Please refer to the vial label for the specific concentration.)
Immunogen	Beta lactoglobulin extract from bovine milk.
Purification	Purified by antigen-affinity chromatography.
Conjugation	Unconjugated
Note	<p>For laboratory research use only. Not for any clinical, therapeutic, or diagnostic use in humans or animals. Not for animal or human consumption.</p> <p>Purchasers shall not, and agree not to enable third parties to, analyze, copy, reverse engineer or otherwise attempt to determine the structure or sequence of the product.</p>



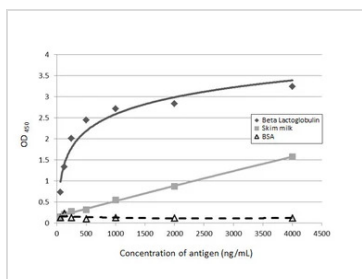
For full product information, images and publications, please visit our [website](#).

## DATA IMAGES



### GTx77272 WB Image

Beta lactoglobulin antibody detects Beta lactoglobulin protein by Western blot analysis. Non-fat milk (0.5µg and 0.1µg and 0.05µg) was separated by 15% SDS-PAGE, and the membrane was blotted with Beta lactoglobulin antibody (GTx77272) at a dilution of 1:10000.



### GTx77272 ELISA Image

ELISA detection of Beta-lactoglobulin using GTx77272 for detection at a concentration of 0.2 µg/mL.



For full product information, images and publications, please visit our [website](https://www.genetex.com).