

## Goat Anti-Mouse IgG antibody

Cat. No. GTX77316

Host	Goat
Clonality	Polyclonal
Isotype	IgG
Applications	WB, ICC/IF, ELISA, IHC
Reactivity	Mouse

References ( 1 )

Package

500 µg

## Applications

## Application Note

\*Optimal dilutions/concentrations should be determined by the researcher.

Suggested dilution	Recommended dilution
WB	0.5 - 0.05 ug/ml
ICC/IF	10 - 2 ug/ml
ELISA	Assay dependent
IHC	1.0 - 5.0 ug/ml

Not tested in other applications.

## Properties

Form	Liquid
Buffer	PBS
Preservative	0.1% Sodium azide
Storage	Store as concentrated solution. Centrifuge briefly prior to opening vial. Store at 4°C.
Concentration	1 mg/ml (Please refer to the vial label for the specific concentration.)
Immunogen	Goats were immunized with purified mouse IgG isolated from pooled normal mouse serum.
Purification	Purified by antigen-affinity chromatography
Conjugation	Unconjugated

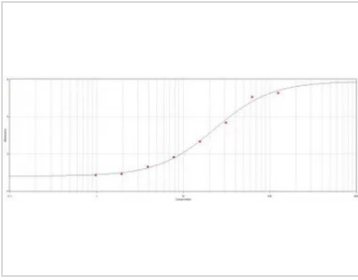
## Note

For laboratory research use only. Not for any clinical, therapeutic, or diagnostic use in humans or animals. Not for animal or human consumption.

Purchasers shall not, and agree not to enable third parties to, analyze, copy, reverse engineer or otherwise attempt to determine the structure or sequence of the product.



For full product information, images and publications, please visit our [website](#).

**DATA IMAGES**

**GTX77316 ELISA Image**

ELISA analysis of immunogen using GTX77316 Mouse IgG antibody.



For full product information, images and publications, please visit our [website](#).