

beta Galactosidase antibody

Cat. No. GTX77365

Host	Chicken
Clonality	Polyclonal
Isotype	IgY
Applications	WB, ICC/IF, IHC-P, IHC-Fr, ELISA, IHC
Reactivity	E. coli

References (14)

Package

100 µg

Applications

Application Note

*Optimal dilutions/concentrations should be determined by the researcher.

Suggested dilution	Recommended dilution
WB	0.2 - 0.05 ug/ml
ICC/IF	10 - 2 ug/ml
IHC-P	Assay dependent
IHC-Fr	Assay dependent
ELISA	Assay dependent
IHC	1.0 - 5.0 ug/ml

Not tested in other applications.

Calculated MW 116 kDa. ([Note](#))

Properties

Form	Liquid
Buffer	PBS
Preservative	0.1% Sodium azide
Storage	Store as concentrated solution. Centrifuge briefly prior to opening vial. Store at 4°C.
Concentration	1 mg/ml (Please refer to the vial label for the specific concentration.)
Immunogen	Chickens were immunized with purified beta-galactosidase from Escherichia coli. After multiple immunizations in Freund's adjuvant, eggs were collected and delipidated. Antibodies were solid phase absorbed then immunoaffinity purified using purified beta-ga
Purification	Purified by antigen-affinity chromatography
Conjugation	Unconjugated

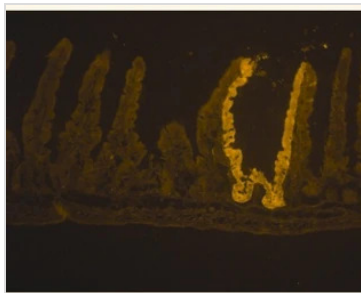


For full product information, images and publications, please visit our [website](#).

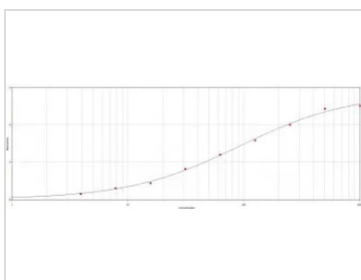
For laboratory research use only. Not for any clinical, therapeutic, or diagnostic use in humans or animals. Not for animal or human consumption.

Note

Purchasers shall not, and agree not to enable third parties to, analyze, copy, reverse engineer or otherwise attempt to determine the structure or sequence of the product.

DATA IMAGES

GTX77365 IHC Image

IHC analysis of immunogen using GTX77365 beta Galactosidase antibody.


GTX77365 ELISA Image

ELISA analysis of immunogen using GTX77365 beta Galactosidase antibody.



For full product information, images and publications, please visit our [website](#).