

c-Myc antibody (HRP)

Cat. No. GTX77381

Host	Rabbit
Clonality	Polyclonal
Isotype	IgG
Application	WB, ELISA, IHC

Package
100 µg

APPLICATION

Application Note

*Optimal dilutions/concentrations should be determined by the researcher.

Suggested dilution	Recommended dilution
WB	0.5 - 0.05ug/ml
ELISA	0.1 - 0.01 ug/ml
IHC	1.0 - 5.0 ug/ml

Not tested in other applications.

PROPERTIES

Form	Liquid
Buffer	50mM HEPES, stabilizer
Preservative	0.002% Thimerosal
Storage	Store as concentrated solution. Centrifuge briefly prior to opening vial. Store at 4°C.
Concentration	1 mg/ml (Please refer to the vial label for the specific concentration.)
Immunogen	Rabbits were immunized with C-MYC peptide conjugated with KLH. After multiple immunizations in Freund's adjuvant, serum was collected. Antibodies were immunoaffinity purified using the peptide immobilized on a solid phase and conjugated with horseradish peroxidase.
Purification	Purified by antigen-affinity chromatography
Conjugation	Horseradish peroxidase(HRP)

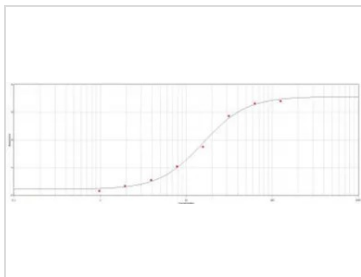
Note

For laboratory research use only. Not for any clinical, therapeutic, or diagnostic use in humans or animals. Not for animal or human consumption.

Purchasers shall not, and agree not to enable third parties to, analyze, copy, reverse engineer or otherwise attempt to determine the structure or sequence of the product.



For full product information, images and publications, please visit our [website](#).

DATA IMAGES

GTX77381 ELISA Image

ELISA analysis of immunogen using GTX77381 c-Myc antibody (HRP).



For full product information, images and publications, please visit our [website](#).