

## HA tag antibody (HRP)

Cat. No. GTX77400

Host	Rabbit
Clonality	Polyclonal
Isotype	IgG
Applications	WB, ELISA
Reactivity	Species independent

Package  
100 µl

## Applications

## Application Note

Suggested starting dilutions are as follows: WB: 1:500-1:3000, ELISA. Not yet tested in other applications. Optimal working dilutions should be determined experimentally by the end user.

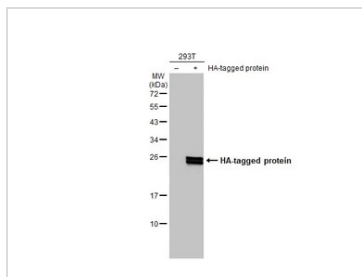
## Properties

Form	Liquid
Buffer	50mM PBS, 200mM NaCl, 1%BSA
Preservative	0.025% Proclin
Storage	Store as concentrated solution. Centrifuge briefly prior to opening vial. For short-term storage (1-2 weeks), store at 4°C. For long-term storage, aliquot and store at -20°C or below. Avoid multiple freeze-thaw cycles.
Concentration	0.2 mg/ml (Please refer to the vial label for the specific concentration.)
Immunogen	Rabbits were immunized with HA-tag conjugated to KLH. After multiple immunizations in Freund's adjuvant, serum was collected. Antibodies were immunoaffinity purified using the peptide conjugated to a solid-phase support then conjugated with HRP (Horseradish Peroxidase).
Purification	Purified by antigen-affinity chromatography.
Conjugation	Horseradish peroxidase(HRP)
Note	<p>For laboratory research use only. Not for any clinical, therapeutic, or diagnostic use in humans or animals. Not for animal or human consumption.</p> <p>Purchasers shall not, and agree not to enable third parties to, analyze, copy, reverse engineer or otherwise attempt to determine the structure or sequence of the product.</p>



For full product information, images and publications, please visit our [website](#).

## DATA IMAGES



### GTX77400 WB Image

Non-transfected (–) and transfected (+) 293T whole cell extracts (30 µg) were separated by 12% SDS-PAGE, and the membrane was blotted with HA tag antibody (HRP) (GTX77400) diluted at 1:3000. The HRP-conjugated anti-FALSE was used to detect the primary antibody.



For full product information, images and publications, please visit our [website](https://www.genetex.com).