

# HA tag antibody (Biotin)

**Cat. No. GTX77401**

<b>Host</b>	Rabbit
<b>Clonality</b>	Polyclonal
<b>Isotype</b>	IgG
<b>Applications</b>	ELISA
<b>Reactivity</b>	Species independent

**Package**  
100 µg

## Applications

### Application Note

\*Optimal dilutions/concentrations should be determined by the researcher.

Suggested dilution	Recommended dilution
ELISA	0.1 - 0.01 ug/ml

Not tested in other applications.

## Properties

<b>Form</b>	Liquid
<b>Buffer</b>	PBS, stabilizer
<b>Preservative</b>	0.1% Sodium azide
<b>Storage</b>	Store as concentrated solution. Centrifuge briefly prior to opening vial. Store at 4°C.
<b>Concentration</b>	1 mg/ml (Please refer to the vial label for the specific concentration.)
<b>Immunogen</b>	Rabbits were immunized with HA-tag conjugated to KLH. After multiple immunizations in Freund's adjuvant, serum was collected. Antibodies were immunoaffinity purified using the peptide conjugated to a solid-phase support and the antibodies were conjugated
<b>Purification</b>	Purified by antigen-affinity chromatography
<b>Conjugation</b>	Biotin

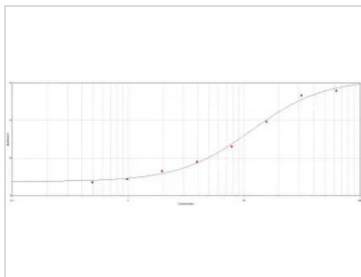
### Note

For laboratory research use only. Not for any clinical, therapeutic, or diagnostic use in humans or animals. Not for animal or human consumption.

Purchasers shall not, and agree not to enable third parties to, analyze, copy, reverse engineer or otherwise attempt to determine the structure or sequence of the product.



For full product information, images and publications, please visit our [website](#).

**DATA IMAGES**

**GTX77401 ELISA Image**

ELISA analysis of immunogen using GTX77401 HA tag antibody (Biotin).



For full product information, images and publications, please visit our [website](#).