

## S Tag antibody (HRP)

**Cat. No. GTX77421**

<b>Host</b>	Rabbit
<b>Clonality</b>	Polyclonal
<b>Isotype</b>	IgG
<b>Applications</b>	WB, ELISA, IHC
<b>Reactivity</b>	Species independent

**Package**  
100 µg

### Applications

#### Application Note

\*Optimal dilutions/concentrations should be determined by the researcher.

Suggested dilution	Recommended dilution
WB	0.5 - 0.05ug/ml
ELISA	0.1 - 0.01 ug/ml
IHC	1.0 - 5.0 ug/ml

Not tested in other applications.

### Properties

<b>Form</b>	Liquid
<b>Buffer</b>	50mM HEPES, stabilizer
<b>Preservative</b>	0.002% Thimerosal
<b>Storage</b>	Store as concentrated solution. Centrifuge briefly prior to opening vial. Store at 4°C.
<b>Concentration</b>	1 mg/ml (Please refer to the vial label for the specific concentration.)
<b>Immunogen</b>	Rabbits were immunized with S-tag conjugated with KLH. After multiple immunizations in Freund's adjuvant, the rabbits were bled and the antibodies immunoaffinity isolated using peptide conjugated with a different carrier. The anti-S-tag antibodies were th
<b>Purification</b>	Purified by antigen-affinity chromatography
<b>Conjugation</b>	Horseradish peroxidase(HRP)

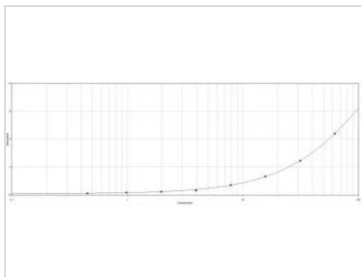
#### Note

For laboratory research use only. Not for any clinical, therapeutic, or diagnostic use in humans or animals. Not for animal or human consumption.

Purchasers shall not, and agree not to enable third parties to, analyze, copy, reverse engineer or otherwise attempt to determine the structure or sequence of the product.



For full product information, images and publications, please visit our [website](#).

**DATA IMAGES**

**GTX77421 ELISA Image**

ELISA analysis of immunogen using GTX77421 S Tag antibody (HRP).



For full product information, images and publications, please visit our [website](#).