

Protein A antibody (HRP)

Cat. No. GTX77595

Host	Chicken
Clonality	Polyclonal
Isotype	IgY
Applications	WB, ELISA
Reactivity	Staphylococcus aureus

References (1)

Package

1 ml

Applications

Application Note

For ELISA: Use at a dilution of 1:5,000-1:20,000. For WB: Use at a dilution of 1:1,000-1:20,000. Optimal dilutions/concentrations should be determined by the researcher.

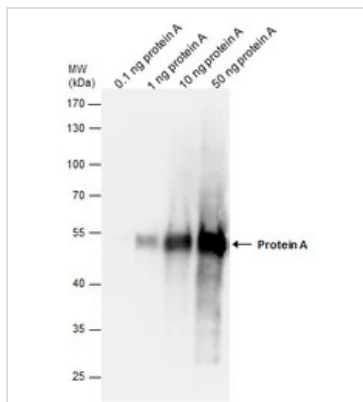
Properties

Form	Liquid
Buffer	0.05M Tris, 0.15M NaCl; 1% BSA
Preservative	0.025% ProClin 300
Storage	Store as concentrated solution. Centrifuge briefly prior to opening vial. For short-term storage (1-2 weeks), store at 4°C. For long-term storage, aliquot and store at -20°C or below. Avoid multiple freeze-thaw cycles.
Concentration	0.43 mg/ml (Please refer to the vial label for the specific concentration.)
Immunogen	Chickens were immunized with purified recombinant protein A. After multiple immunizations in Freund's adjuvant, eggs were collected and delipidated. Antibodies were immunoaffinity purified off protein A agarose and conjugated with horseradish peroxidase (HRP).
Purification	Purified by antigen-affinity chromatography.
Conjugation	Horseradish peroxidase(HRP)
Note	<p>For laboratory research use only. Not for any clinical, therapeutic, or diagnostic use in humans or animals. Not for animal or human consumption.</p> <p>Purchasers shall not, and agree not to enable third parties to, analyze, copy, reverse engineer or otherwise attempt to determine the structure or sequence of the product.</p>



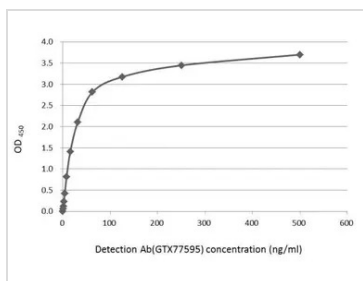
For full product information, images and publications, please visit our [website](#).

DATA IMAGES



GTX77595 WB Image

Protein A antibody detects Protein A protein by Western blot analysis. Recombinant Protein (0.1ng and 0.1 μ g) was separated by 10% SDS-PAGE, and the membrane was blotted with Protein A antibody (GTX77595) at a dilution of 1:20000.



GTX77595 ELISA Image

An ELISA plate is coated with 50 μ L of a Protein A recombinant protein at 10 μ g/mL. The coated protein is detected with HRP-conjugated anti-Protein A antibody (GTX77595) at concentration ranged from 0.49 to 500 ng/mL.



For full product information, images and publications, please visit our [website](#).