

Chk2 antibody

Cat. No. GTX77609

Host	Mouse
Clonality	Polyclonal
Isotype	IgG
Applications	WB
Reactivity	Human

Package

50 µl

Applications

Application Note

For WB: Use at a dilution of 1:1,000. Optimal dilutions/concentrations should be determined by the researcher.

Calculated MW 61 kDa. ([Note](#))

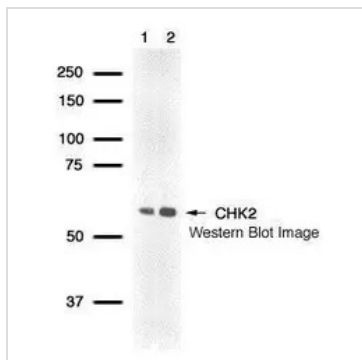
Properties

Form	Liquid
Buffer	Serum
Storage	Store as concentrated solution. Centrifuge briefly prior to opening vial. For short-term storage (1-2 weeks), store at 4°C. For long-term storage, aliquot and store at -20°C or below. Avoid multiple freeze-thaw cycles.
Purification	Unpurified From polyclonal serum
Conjugation	Unconjugated
Note	For laboratory research use only. Not for any clinical, therapeutic, or diagnostic use in humans or animals. Not for animal or human consumption. Purchasers shall not, and agree not to enable third parties to, analyze, copy, reverse engineer or otherwise attempt to determine the structure or sequence of the product.



For full product information, images and publications, please visit our [website](#).

DATA IMAGES



GTK77609 WB Image

Detection of human CHK2 protein using GeneTex CHK2 polyclonal antiserum (GTK77609) in Molt4 whole cell lysate (lane 1) and Jurkat whole cell lysate (lane 2).



For full product information, images and publications, please visit our [website](#).