

Cyclin G2 antibody, N-term

Cat. No. GTX77670

Host	Rabbit
Clonality	Polyclonal
Isotype	IgG
Applications	WB
Reactivity	Human, Chicken

References (2)

Package

100 µg

Applications

Application Note

*Optimal dilutions/concentrations should be determined by the researcher.

Suggested dilution	Recommended dilution
WB	0.2-2.5 ug/ml
Not tested in other applications.	

Calculated MW 39 kDa. ([Note](#))

Properties

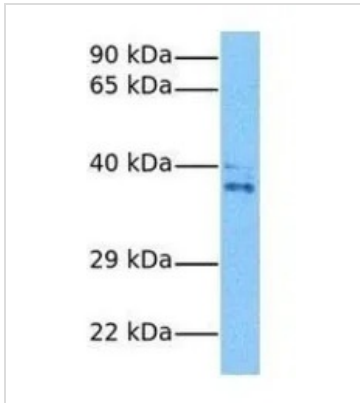
Form	Liquid
Buffer	PBS, 2% Sucrose
Preservative	0.09% Sodium azide
Storage	Store as concentrated solution. Centrifuge briefly prior to opening vial. For short-term storage (1-2 weeks), store at 4°C. For long-term storage, aliquot and store at -20°C or below. Avoid multiple freeze-thaw cycles.
Concentration	0.5-1 mg/ml (Please refer to the vial label for the specific concentration.)
Immunogen	A synthetic peptide corresponding to a N-terminal region of Human Cyclin G2
Purification	Protein A purified
Conjugation	Unconjugated

Note

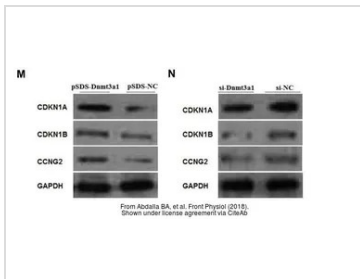
For laboratory research use only. Not for any clinical, therapeutic, or diagnostic use in humans or animals. Not for animal or human consumption.

Purchasers shall not, and agree not to enable third parties to, analyze, copy, reverse engineer or otherwise attempt to determine the structure or sequence of the product.

For full product information, images and publications, please visit our [website](#).

DATA IMAGES

GTX77670 WB Image

WB analysis of 293T cells using GTX77670 Cyclin G2 antibody at 1.0µg/ml.


GTX77670 WB Image

The data was published in the journal *Front Physiol* in 2018. [PMID: 30333755](https://pubmed.ncbi.nlm.nih.gov/30333755/)



For full product information, images and publications, please visit our [website](https://www.genetex.com).